

New Elementary School Presentation

Located in the
North Attendance District

December 14, 2015

Why a New School?

Goals:

1. Reduce current enrollment at Scott and Oak Hill

Scott Current Enrollment = 920

Oak Hill Current Enrollment = 842

2. Prepare for Additional Growth

Scott Average Growth per Year: 55 students

Oak Hill Average Growth per Year: 20 students

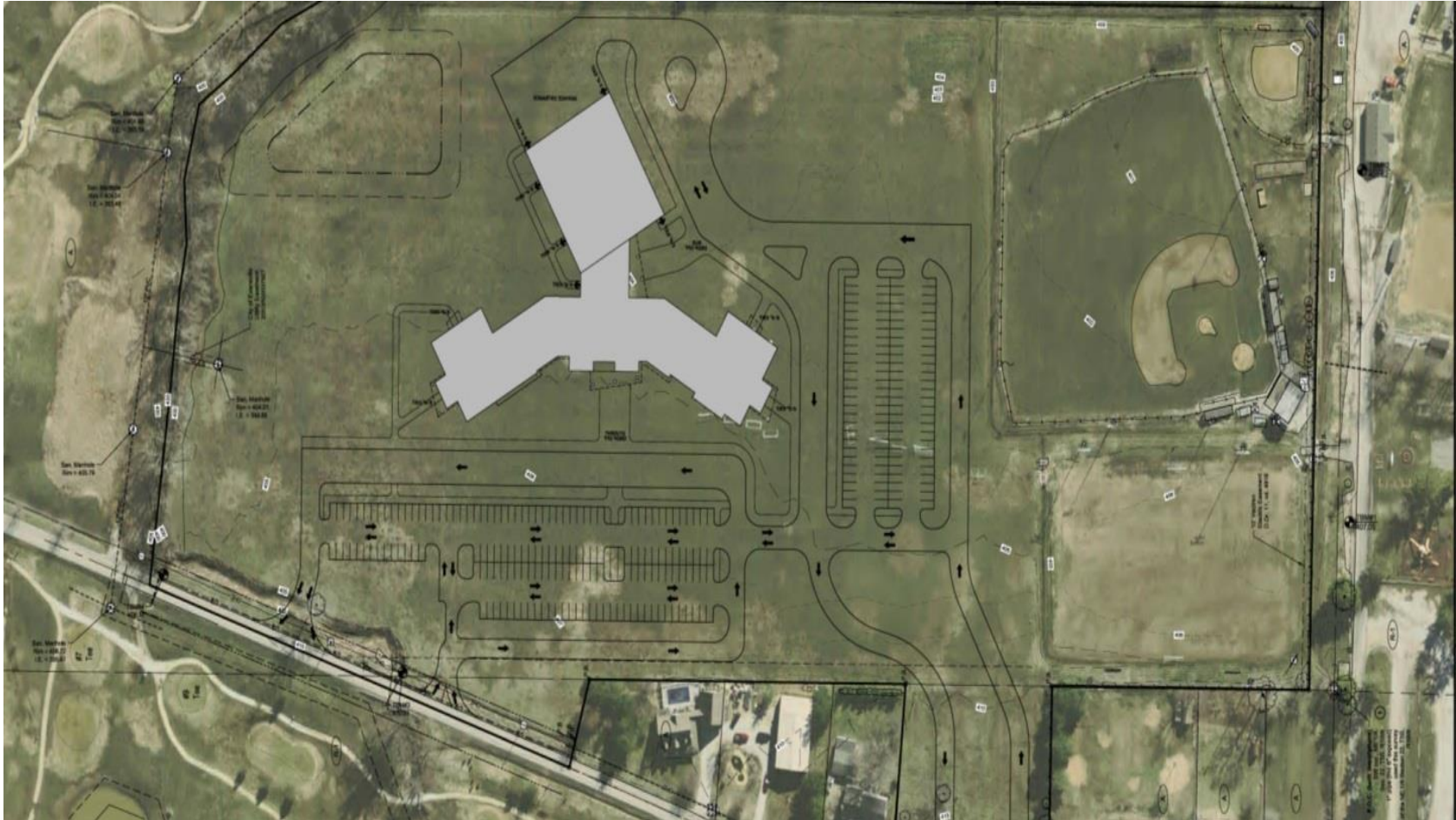
Building Site

- Purchased in 1995 specifically as a future school site.
- Site includes approximately 25 acres.
- Property is located on Petersburg Road just north of Viehe Drive.

Building Site



Potential School Placement



School Specific Details

Architect	Hafer Associates
Anticipated Groundbreaking	Winter 2016
School Opens	2018-2019 School Year
Grade Configuration	Pre-K through Grade 6
Building Capacity	1000 Students
New school boundaries would be drawn from portions of Scott and Oak Hill schools.	
Students currently in Kindergarten through third grade would be the first students to attend the New School!	

Funding

Current Available Funds:

\$5.7M

Est. Funds Available from 2015:

\$3.0M

\$8.7M
Current Funds
Available

Anticipated Funding in 2016 Budget:

\$5.5M

Anticipated Funding in 2017 Budget:

\$2.0M

Total Funds Saved for Project:

\$16.2M

Anticipated Building Cost:

\$13.5-\$15.0M



COMPLETELY paid for from savings

Morley & Associates, Inc. Study

Current State

	Scott Portion	Oak Hill Portion	New School Total
Current Students in New Boundary	395	344	749
Current Site Ready Parcels	287	227	514
Potential Additional Students from Site Ready Parcels	60	47	107

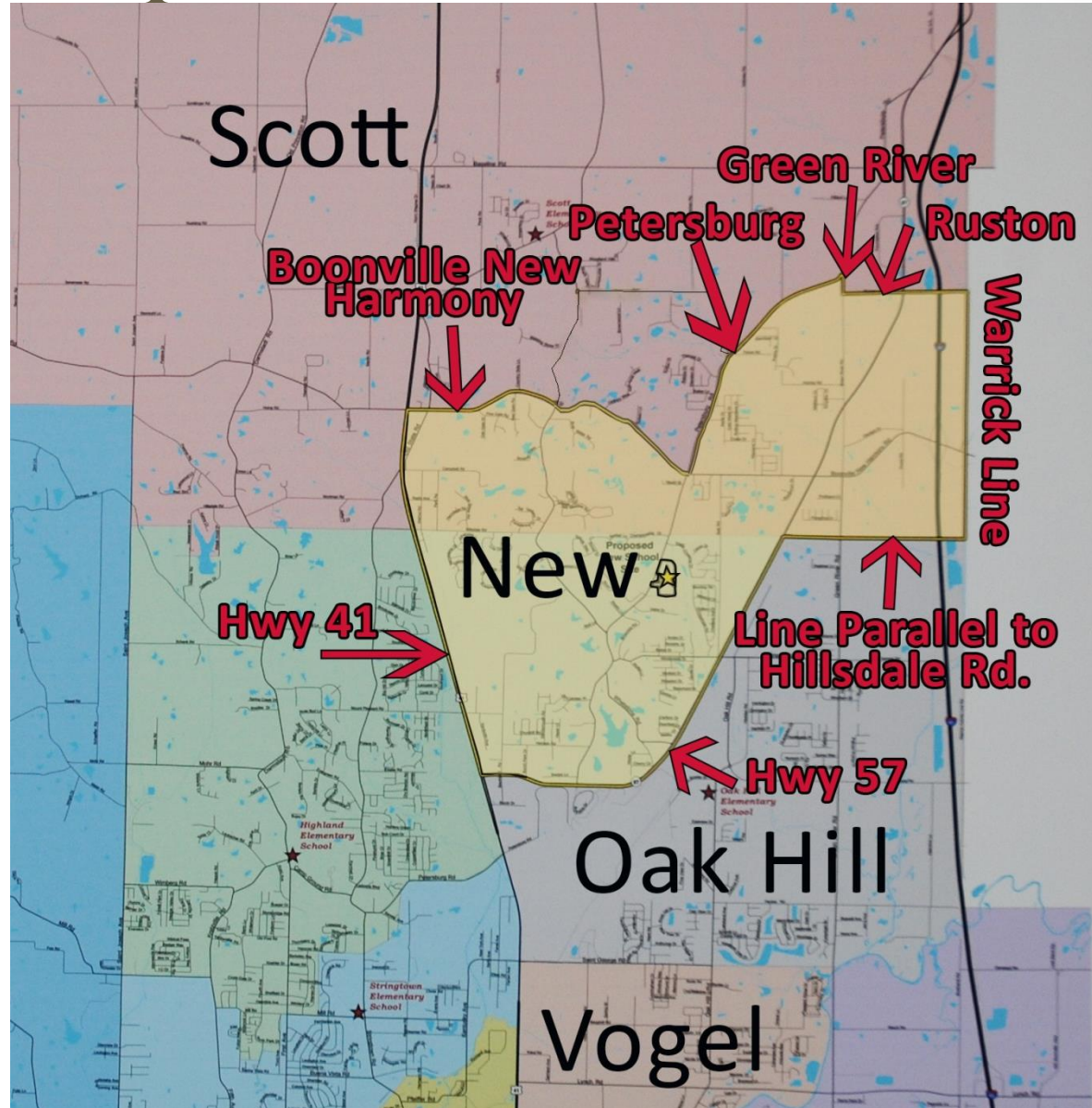
Morley & Associates, Inc. Study

Long-term Considerations

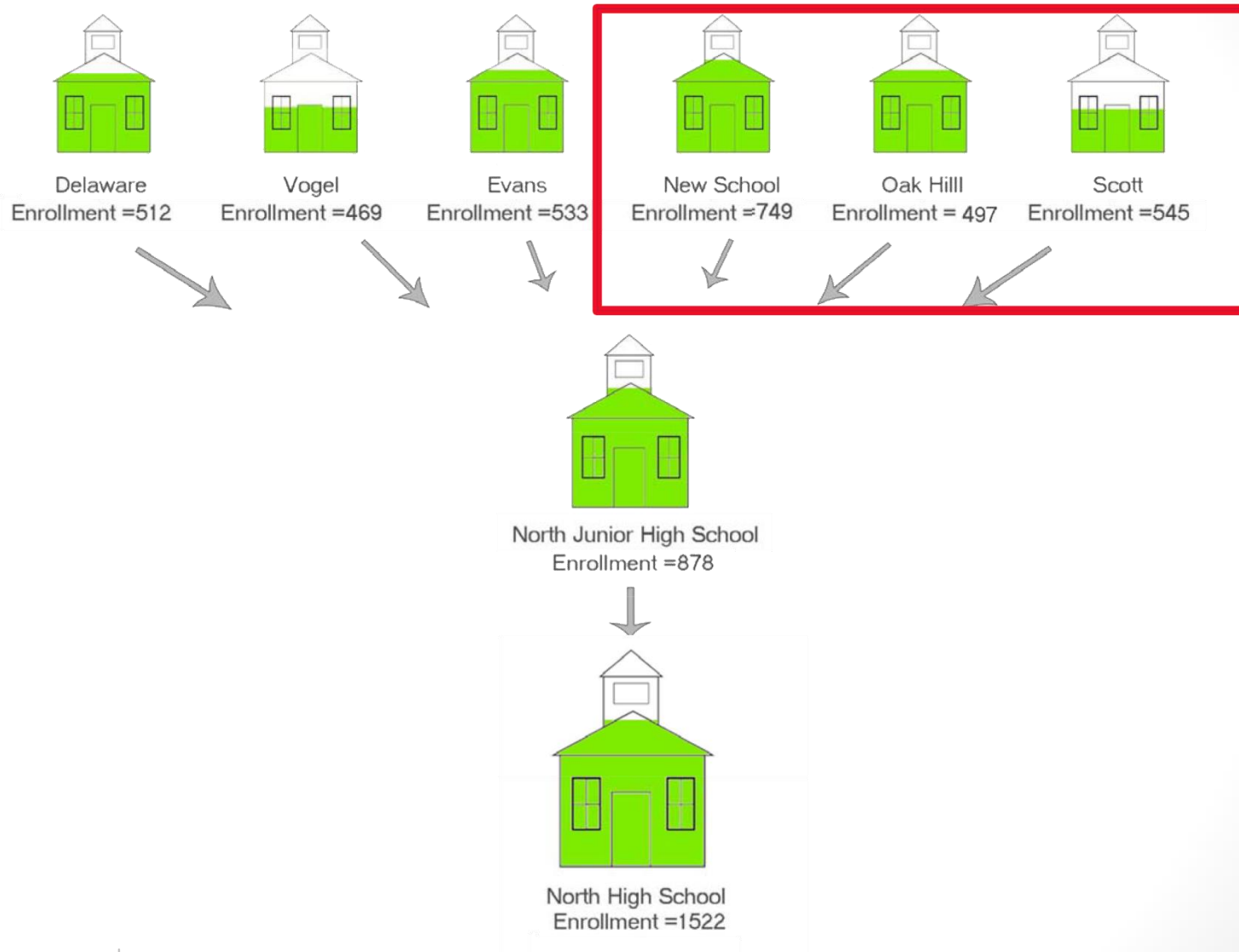
	Scott Portion	Oak Hill Portion	New School Total
Development Areas in Acres	2,164	941	3,105
Potential Lots @ 3 per Acre	6,492	2,823	9,315
Potential Students	1,357	590	1,947
Potential Students @ 50%	678	295	973

Long-term potential growth = 973 students. These students would be in addition to the 856 students that were identified in the previous slide.

Proposed Boundaries



Enrollment



Additional Information

Majority of teaching staff will come from Scott and Oak Hill

Informational letters will be mailed home to parents

Stakeholder meetings will be held

School naming opportunities

Development of school mascot and colors

Potentially built as a Net Zero School

Proposed Boundaries

