

THE CITY-COUNTY OBSERVER

An Online Community Newspaper Dedicated To Serving
The Citizens of Posey, Vanderburgh , and Warrick Counties

MARCH 18, 2010

VOLUME III, ISSUE 09

Money Trail: Water and Sewer Contracts Connected to Campaign Donations

By Jamie Grabert, Publisher

The "Money Trail" is a series of articles linking campaign donations for local politicians to contracts for municipal projects.

The series, which began on February 4, 2010, is now on its fourth installment. This week, the focus returns to Water and Sewer Utility contracts.

The make it clear, these articles are meant to inform the taxpayers about how their money is being spent. Many questions have been answered, and many conclusions have been drawn by our staff and our readers. The City-County Observer is merely presenting the facts; these articles do not draw any conclusions for its readers. While corporate, political action committees and individuals certainly have the right to donate to the candidate(s) of their choice, it begs the question, why do so many out-of-town donors care about who holds office in Evansville if they aren't getting something in return?

This week's article focuses on three companies. The following have been randomly selected based on the order in which they were located: Clark Dietz, American Structurepoint (a subsidiary of American Consulting), and Commonwealth Engineering.

CLARK DIETZ

Clark Dietz, which is a company based in Champaign, Ill., with offices in Evansville, has given a total of \$35,050 in years 2006, 2007, 2008, and 2009 to Evansville Mayor Jonathan Weinzapfel's campaign fund. In that time, a total of \$2,000 was donated as a corporation; individual totals were \$7,000; and the Clark Dietz Political Action Committee (PAC) gave \$26,050.

In 2006, Clark Dietz made a corporate donation of \$1,000 on August 6. The PAC donated a total of \$5,250. Donations were made on January 26 and October 24.

In 2007, three individuals linked to Clark Dietz each made \$1,000 donations for a combined total of \$3,000. (On July 24, 2007, John Boldt, Dale Tekippe and Kenneth Nelson each made

\$1,000 contributions.) The PAC gave donations on May 5 and July 24, totaling \$2,900.

A total of \$8,800 was donated to Mayor Weinzapfel's campaign fund in 2008. A corporate contribution of \$1,000 was recorded on September 16. The CD PAC made donations totaling \$7,800, with contributions being made on January 14, February 20, and December 11.

The greatest amount of campaign contributions from Clark Dietz were made in 2009. Individuals gave a total of \$4,100. (On November 24, 2009, Hans J. Peterson, Michael Labitzke, Dale Tekippe, and Kenneth E. Nelson each donated \$1,000. Labitzke made an additional donation of \$100 on

December 16.) The CD PAC donated a total of \$10,000 last year.

Although Clark Dietz has received numerous contracts in the past, two recent agreements with the Evansville Water and Sewer Departments were found.

The first agreement located was the contract for Construction Engineering and Oversight for the Southeast Boulevard Sewer Separation Project. The amount to be paid to Clark Dietz for this contract is \$1,971,000.

The second agreement was for the update on the Combined Sewer Overflow (CSO) Long-Term Control Plan. The amount of this contract is \$815,290.

AMERICAN STRUCTUREPOINT/AMERICAN CONSULTING

American Structurepoint, a subsidiary of American Consulting, is an Indianapolis-based engineering and consulting firm. Donations from American Structurepoint tracked from 2007 through 2009 totaled \$31,248.10. These donations were made by two individuals listed with the Indiana Secretary of State as principals with American Structurepoint.

In 2007, Greg Henneke, listed as Vice President, donated a

continued on page 2



NEWS

Money Trail...continued from page 1

total of \$5,300, making contributions on five separate occasions.

Henneke made four individual donations in 2008 equaling \$9,500. James A. Kovacs also made a donation on December 11, 2008, in the amount of \$1,000. The combined total for 2008 was \$10,500.

In 2009, Henneke donated \$7,000 through contributions made directly to Mayor Weinzapfel's campaign fund. He reportedly made an in-kind donation for a fundraiser in the amount of \$948.10 on September 9, 2009. Kovacs also made two separate donations last year, contributing a total of \$7,000. These two individuals combined gave sum of \$15,448.10

American Structurepoint has at least two city projects at this time. The first project noted is the Construction Engineering and Administration Services for the Veteran's Memorial Water Main Relocation. The total amount listed for this contract is \$267,795.

The second agreement is for the Final Design of the Cass Avenue Stormwater Project. The amount of this contract is \$809,700.

COMMONWEALTH ENGINEERING

Commonwealth Engineering, an Indianapolis-based engineering firm, and Vice President Vincent Sommers have donated a combined total of \$19,515 from 2006 through 2009.

In 2006, the only donation was made on February 2, in the amount of \$2,000.

In 2007, Sommers made two donations that totaled \$1,250.

Sommers made three separate donations in 2008 (May 16, September 22, and December 11). These contributions totaled \$5,750.

Five donations were made by Sommers in 2009 (April 20, September 15, October 15, November 11 and December 16). Last year's contributions equaled \$10,515.

Commonwealth Engineers currently has a contract for work on the Evansville Museum Sewer Relocation Project. The contract amount for this project is \$120,500.

The second project Commonwealth Engineers is working on for the city is for Engineering Services Relating to the Howell-Fairlawn Water Quality Project. The total amount for this contract is \$172,850.

A third contract was also located. This contract was for the Mount Auburn Sewer Project. The total contract amount on this project was \$363,007.

Check the City-County Observer next week as we continue our "Money Trail" series.

JOSEPH H. HARRISON, JR.

CONCENTRATING IN:

- ~ Family Law
- ~ Personal Injury
- ~ Claims Against Government Entities
- ~ General Business Matters



Joseph H. Harrison, Jr.
Attorney-At-Law
jhj@bowersharrison.com

BOWERS HARRISON, LLP

(812) 491-8204

For more information visit www.bowersharrison.com

SPECIAL TO THE OBSERVER

The Genesis of GAGE and my Roll in the Process

By Joe J. Wallace



On a June day in 2006, I was busy at home preparing to leave Evansville. My phone rang and a member of the board of ABCDE, the local business incubator asked if I would consider becoming the Executive Director of a new organization called Innovation Pointe. I eagerly accepted the challenge and embraced the vision of an entity that would inspire entrepreneurs to do in Evansville, the kinds of things that I had been a part of in my Silicon Valley days.

Innovation Pointe became the focal point

that gave birth to GAGE. I was named the founding president and CEO of the fledgling economic development agency in April of 2007.

The vision of GAGE that attracted me was to inspire and assist knowledge based businesses for the purpose of creating wealth and good jobs in greater Evansville. We chose as goals incubation, business assistance, and making patented technology available to local business through our Tech Transfer program with Crane. This was the first multi-state agreement of this type in the United States.

For efficiency, we also took on the management of Downtown Evansville Inc. and with it, the tasks of supporting the downtown with entertainment events and some governmental functions as their contract specified. It was this division that took on the task of the 2009 Freedom Festival

We staffed up, refurbished the building at 318 Main, sold the Orr Iron Building, and travelled the country to learn what other places were doing to enable prosperity. We adopted what was working, adapted it to local needs, and when there was nothing to copy, we resorted to inventiveness and innovation. In September of 2008 when the Tech Transfer agreement was signed, it seemed as though we had completed a sustainable foundation for a clearing house to create knowledge based wealth and jobs along with economic prosperity. The future was bright and GAGE was at its zenith.

It is widely known that GAGE and I severed our relationship last July. I have remained a friend of GAGE and wish it success in continuing the visions upon which it was founded. This week my phone rang again and this time it was the City-County Observer on the line wanting to know if I would discuss my time at GAGE with them. I am familiar with the curiosities that they have with GAGE and would like to offer the following to hopefully clarify some of the rumors that seem to be fueling these curiosities.

I did not have \$40,000 of furnishings and 8 televisions in my office. A little bit of truth and a lot of speculation can sometimes send an incorrect message. GAGE did spend roughly \$40,000 on furniture for a staff of twelve, the reception area, and the executive conference room. My furniture was exactly like everyone else's, as it should be. It probably cost about \$3,000. The artwork was my personal property. There were eight televisions purchased for the digital signage system in the building. There is one on each floor, one in the front, and two in the media

center. Digital signage is part of having a state of the art facility. We were actually quite frugal in our quest for furnishings. Julie Gorman clipped coupons for 6 months so we could get our 50+ chairs at Office Depot for \$49 each. The quote from a list of approved public suppliers was over \$300 each. Julie's coupon clipping saved GAGE \$13,000. It was typical for all of us to use our entrepreneurial skills to get better deals. We practiced what we preached.

With respect to the "is it true" question on consulting contracts of any individual, I prefer not to discuss any specifics. I would like to express my position on salaries with a true story. I grew up as an avid fan of UK basketball. I along with the rest of the Big Blue Nation expect national excellence every year. UK's coach, John Calipari, is on the public payroll at a salary of \$400,000 per year. His compensation package however is the highest in the country at over \$4 million per year. UK does this by arranging outside agreements for Coach Calipari. In a single year the team has gone from being below average to #2 in the nation with a realistic goal of an NCAA championship. Would they be in this position with a coach they could afford with the \$400,000 limitation of the "official" pay scale? No way!

When you pay for the best you can hire the best. When you hire the best and let them do their job without interference your organization will excel. Talent is not the place to practice frugality. Municipalities, universities, and businesses that adopt salary structures that are not competitive on a national scale seal their own fate as perpetually mediocre.

Since separating from GAGE, I am still advising start-up and emerging businesses. They include smart grid electronics, recycled plastics, electric vehicles, digital signage, architecture, IT, and even incubation. I also write a monthly column on business economics for a national publication. I am basically doing what I did at GAGE but many of my clients are not in greater Evansville.

I have also been writing local columns in an effort to inspire others to make Evansville a better place to live. I am able to write about subjects that I could have never touched as the CEO of GAGE. I am actually in a position to make more of a positive impact now, than I could as president of GAGE.

In 1982, I became a brain drainer, one of those newly educated college students who left Evansville for a better career opportunity than was available here. That led me to Silicon Valley and the graduate engineering school at Stanford University. What I learned and accomplished there enabled me to be a part of establishing GAGE's platform as a world class business support entity. It is only through making good decisions, adopting competitive public policy, and taking definitive actions that Evansville will make the transition from okay to good and from good to great. Today, Evansville is okay.

I am considering becoming a brain drainer again. If I leave again, it will be for the same reasons that I did in 1982. I have roughly ten years to make more profound positive differences. I desire to do that with businesses in the community that I live in. I want to be surrounded by excellence. My jury on Evansville's willingness to become excellent and to provide world class opportunities is still hung.

NEWS

CURRENT ISSUES IN THE AREAS OF ESTATE, TAX AND PERSONAL AND BUSINESS PLANNING



By Randall K. Craig

The information that follows summarizes some of the current issues in the areas of estate, tax and personal and business planning which may be of interest to you. Although this information is accurate and authoritative, it is general in nature and not intended to constitute specific professional advice. For professional advice or more specific information, please contact my office.

Is A Reverse Mortgage Right For You? A reverse mortgage is one of the “home equity conversion” (HEC) options by which a home owner may “convert” the home’s equity into additional spendable income. The most common HEC is a reverse mortgage (RM). There are many different types, but in general, interest is added to principal each month, and the total debt will increase over time, with the “principal” being pulled out by the borrower either in a lump sum, monthly, or sporadically. The principal and accumulated interest is not due until the home sells or the homeowner dies. An RM can affect public benefits such as Medicaid and SSI. The cost of implementing an RM is very high relative to other loans. Also, the aggressive marketing of RMs has made seniors vulnerable to predatory lending practices. Government Accountability Office (GAO) investigators have examined the issue of counseling, attending counseling sessions in diverse regions around the country, and found that adequate oversight by HUD has not been implemented, counselors failed to strictly comply with applicable statutes and have omitted information required by HUD, and borrowers did not have adequate information to make informed decisions.

There has also been a problem with cross-selling to RM borrowers. Because the borrower will have access to large sums of money from the mortgage proceeds, they have been targeted for the sale of inappropriate financial instruments, such as annuities and life insurance. It should be noted that there are proprietary, or private, reverse mortgages offered by the private sector, which are not HUD approved and not FHA insured. Because RMs are complicated, can affect public benefits, and may not be appropriate for many individuals, and because there are other options, I recommend that people not only be certain that they understand them before making any decision, but that they also evaluate oth-

er options and involve their immediate family in considering the other alternatives which are available. It is possible to work out different arrangements and even private reverse mortgage loans between family members that can be very flexible, considerably less expensive, and allow the family to control the residence and the wealth of the RM borrower without necessarily adversely affecting public benefits.

Why Bother To Plan? As noted in my previous newsletter, there is currently no federal estate tax and no generation-skipping transfer (GST) tax. Of course, most planners believe that the federal estate tax rules will return, although with exemptions at such a level that many people may feel that planning may be irrelevant for the foreseeable future. However, for both tax and non-tax reasons, that opinion could not be further from the truth. Without regard to the federal estate tax rules, which may or may not apply to certain individuals, a myriad of other laws and regulations exist which suggest the need for comprehensive planning. The effect of federal and state income tax laws and regulations must also be taken into account, in particular when the asset being disposed of is a qualified benefit, such as an IRA or 401(k). People who assume that a last will and testament can address all of their planning concerns are deluding themselves, since a person’s last will and testament will have no effect on the individual’s life insurance, annuities, or other contractual benefits, such as an IRA or 401(k), which all will pass by a beneficiary designation. Further, having those assets pass through your estate, to be disposed of by your will, can create some significant probate complications and tax costs. It is always necessary to coordinate the many ways that property can pass, such as through beneficiary designations, pay-on-death (POD) and transfer-on-death (TOD) payee designations, and contractual dispositions through trusts, to be consistent with the individual’s last will and testament. Although every person should have a last will and testament, it is my opinion that the most important legal document for individuals to have is a comprehensive and well thought-out durable general power of attorney.

The next few issues of this newsletter will address several aspects of planning which are often overlooked. Many estate-planning professionals emphasize concepts which are designed to appeal to the wealthy, since it seems that many financial advisors are seeking out the wealthy client rather than trying to help the typical person deal with their own complex issues that are rarely adequately addressed by taking a holistic approach to planning, and emphasizing less the concept of “estate-planning,” and concentrating more on issues relating to lifetime and asset

NEWS

CURRENT ISSUES

continued from page A-4

protection planning and dealing with the issues of incapacity and long-term care. After all, it is more likely that at any given point in time, at the age of 2 or at the age of 92, that you will be incapacitated rather than that you will die at that particular point in time. To disregard those areas of concern is a fool's folly.

SWIRCA Fantasy Finds Auction Benefit Update. Readers should receive this newsletter in time to purchase tickets to attend or to support financially the SWIRCA Fantasy Finds benefit auction to be held on Saturday, March 13, 2010. Please refer to our last newsletter, and please view SWIRCA's website: <http://www.swirca.org>. If you have questions about the auction or would like to support SWIRCA in any way, please contact SWIRCA's Development Director, Judith D. Freson, 16 West Virginia Street, Evansville, Indiana 47710-1742, by telephone at 812/464 7800 or 800/253-2188, or by e-mail at jfreson@swirca.org.

2010 Medicaid And Medicare Amounts. It has been quite some time since we have referenced some of the applicable Medicaid and Medicare factors which are important for planning and reimbursement purposes. The following are some of the relevant figures:

Maximum Community Spouse Resource Allowance:
\$109,560

Minimum Community Spouse Resource Allowance:
\$21,912

Maximum Monthly Maintenance Needs Allowance:
\$2,739

Minimum Monthly Maintenance Needs Allowance:
\$1,823

Medicare Part B Premium (deducted from social security payments)
\$96.40

Medicare SNF Co-Insurance per day (Days 21-100)
\$137.50

Medicaid Income Limit for Aged and Disabled Waiver:
\$2,022

Some of these factors change at different times during the year. For example, the community spouse minimum monthly maintenance needs allowance changes on July 1 of each year, unless due to the cost of living there is no increase in a particular year. It should be noted also that the maximum community spouse resource allowance of \$109,560, referenced above, may not in fact be the maximum to the extent that the community spouse may be able to retain additional resources in order to generate a higher level of income. For further information, consult my website www.rkcraiglaw.com.

ELECT A WESTSIDE NATIVE

PICK RICK RINEY!



**DEMOCRAT
CANDIDATE
FOR PERRY
TOWNSHIP
TRUSTEE**

- *Serve the people as a full-time trustee.
- *Retired firefighter.
- *A U.S. Navy Vietnam Veteran
- *Caring and compassionate.
- *Give the citizens of our community a helping hand during difficult times.
- *Not a career politician, and have never been elected to a public office.
- *Deeply involved in social and athletic activities on the Westside.
- *WILL NOT SEEK A PAY RAISE WHILE IN OFFICE.

Pick Rick on May 4th

Paid for by the Committee to Elect Rick Riney Perry
Township Trustee. Bonnie Toone, Chairman

ASK THE TAX MASTER

Independent Contractor VS Employee



By Jeff Day, EA

Much too often, small fledgling companies will put persons to work wanting to show the person as an independent contractor that is self-employed instead as an employee. Much too often, that person is either poor or young or both that does not understand his/her rights. The company wants to treat the person as an independent contractor to save on many costs such as no matching social security taxes, unemployment insurance

and workmen's compensation.

The US Government says there are some tests to determine if a person is legally an employee or an independent contractor and that neither the company nor the individual has the right to just decide the legal employment status. Oftentimes a person is offered to be paid a flat amount of money for either the job or by the hour and he thinks that he will be paid "under the table" and no one will be any wiser. Then at the end of the year all of a sudden he receives in the mail a 1099Miscellaneous. Then he visits a tax preparer and finds out the consequences. Too often he will then decide to ignore the form and not file a tax return or leave off the form. Then almost two years later he gets a notice that is not nice from the IRS. Then what to do? Now the IRS doesn't have much compassion for the worker, since they think he wanted to deliberately ignore the income on his tax returns.

How to determine if the person is in fact an independent contractor or should have been an employee is determined by several tests: Behavioral Control, Financial Control, Relationship of the Worker and the Firm.

Behavioral Control: Who determines the methods by which the assignments are performed? What location does the worker perform the services (firm's premises, own shop, home, customer's locations)? Is the worker required to attend any meetings? Is the worker required to provide the services personally? If the worker hires substitutes or helpers is approval required from the firm? Who pays the substitutes or helpers? Who determines when the services are to be performed? Who is the worker required to contact if problems or complaints arise and who is responsible for the resolution?

Financial Control: Who owns the equipment and tools that are used in the work? Who does the customer pay? What economic loss or financial risk can the worker incur beyond the loss of salary (loss or damage of equipment, materials in the job, etc)? Type of pay the worker receives, is it a salary, commission or hourly wage?

Relationship of the Worker and the Firm: Did the worker perform similar services for others during the same time period? Can the relationship be terminated by either party without incurring liability? Are there any benefits available to the worker or any other persons performing same services (e.g. paid vacations, sick pay, personal days, insurance benefits)? How does the firm represent the worker to it's customers (e.g. employee, partner, representative, or contractor)?

If a person has been paid as an independent contractor and he believes he should have been treated as an employee, he should immediately contact a qualified professional for assistance in preparing a "Determination of Worker Status" with the internal revenue service. It is not unusual for the process to take over a year. If the IRS determines that the firm should have treated the person as an employee, then all others with same circumstances will be treated as employees as well. The consequences of this can be financial ruin for the firm as a result of the dire penalties and interest.

If you have a question for the Tax Master, please email him @ jeffrey.day@tax.hrblock.com

it's delightful... it's delicious...

iLegge's
RESTAURANT
Italian & American Cuisine

Catering for all occasions
Lunch specials daily
Full bar service

Click here to see full menu!
dine in or take out

Celebrating 24 years

for reservations, call
(812) 428 3004

OPEN
Mon-Fri: 11am-10pm
Saturday: 4pm-10pm
Sunday - closed

607 N. Main St.
Evansville, IN
(812) 428-3004

major credit cards accepted



BREAKFAST DAILY! 7AM

\$4.00 BREAKFAST PLATE
\$5.00 LUNCH PLATE



SHOOT FOR THE CHAMPIONSHIP CONTEST

Friday, March 12th
Call for Details

Every Monday
\$1 Draft

Every Tuesday
Open Jam, 9pm
\$4 Bomb Specials

Benefit for Halti
with Open Jam
9pm
March 2nd

Every Wednesday
Karaoke, 10pm
\$2.25 Longnecks
\$4 Burger Basket

St. Patrick's Day Party
March 17th

Every Thursday
Karaoke, 10pm
\$3 Wells

Every Friday
Karaoke, 10pm



See our website for
 our complete calendar
www.lamascoharadgrill.com

Live Music MARCH

SAT.

SUN.

6

Namaste
10pm

7

**Strolling
Tones**
8pm

13

CALABASH
10pm

14

**Andria
Reed**
8pm

20

Akacia
10pm

21

**Anna
Beth &
Gary
Ward**
8pm

27

**Hoosier
Daddy**
10pm

28

**Shawn
Needham
& the
Black
Sheep**
8pm



EDITORIAL

IS IT TRUE?



Compiled by 'Moles' Number 1 through 146...and counting

IS IT TRUE City Councilman Curt John went to Indianapolis to try to get permits for a new restaurant/bar he and others are starting there? IS IT TRUE the local ABC Board in Marion County rejected his request to locate his new bar in that county? IS IT TRUE this is the reason he missed Monday's Evansville City Council meeting and the vote on the smoking ordinance?

IS IT TRUE Councilman Curt John has ownership in three (3) bars in Evansville proper? IS IT TRUE he told a Channel 14 TV reporter on Tuesday if he was here during the voting of the Non-Smoking ordinance at the last Evansville City Council meeting he would have voted against it? IS IT TRUE if he would have voted on this issue, he may have had a "Conflict of Interest" problem?

IS IT TRUE does City Councilwomen Connie Robinson have any "Conflict of Interest" problems because her business directly does business with Casino? IS IT TRUE that MRS. Robinson should have recused herself from voting on the Evansville Smoking ordinance at the last Council meeting? IS IT TRUE that Councilwomen Robinson should also file a "Conflict of Interest" statement with the Vanderburgh County Clerk because of her involvement as a board member with Evansville Brownfields Corp?

IS IT TRUE the Vanderburgh County Republican Party has hired Lauren Fakes as the new Executive Director? IS IT TRUE Ms. Fakes has worked as an intern for the Indiana Republican House Campaign Committee in Indianapolis? IS IT TRUE that this hire doubles the staff of the local Republican party? IS IT ALSO TRUE we hope she will immediately seek the guidance and wisdom of the old guard of the local party?

IS IT TRUE we wonder if the President of the Evansville City Council ever owned interest in FAST EDDY'S bar? IS IT TRUE if he does he, should have recused himself from voting on the smoking ordinance last Monday?

IS IT TRUE that the Vanderburgh County Republican Party does not have all of its precinct committeemen seats filled? IS IT TRUE that party leaders have known about this issue for over 2 years but have failed to appoint an appropriate number of committeemen to the party? IS IT TRUE that without precinct committeemen, the Republican Party will remain unable to establish a grassroots effort and will therefore be ineffective as an organization? IS IT TRUE we believe that the lack of responsible leadership in the local Republican party is to blame for this blatant organizational failure?

Is it True Vanderburgh County Assessor Jonathan Weaver had two complete website makeovers within the last 3 years? IS IT TRUE it cost the county nothing because he used the in-house computer services company already under contract with the city/county? IS IT TRUE this is an example of good public policy?

IS IT TRUE if any political organization (DEMOCRATIC or REPUBLICAN) would like to see how a grassroots political organizations should run they should observe how the Republican Party in Warrick County conducts its business?

IS IT TRUE the publisher of the CITY COUNTY OBSERVER asked TOM BARNETT, Director of Metropolitan Development of Evansville the following questions 21 days ago? IS IT TRUE we haven't heard a peep from MR. BARNETT since we emailed him? IS IT TRUE the questions we ask Mr. Barnett to answer are as follows; 1) Have you ever served on the GAGE board? If so, when? 2) Have you ever personally received any funds or payments directly from GAGE? If so, how much and when? If so, did they pay you directly with a check? 3) If you receive any funds from Gage, what was the reason for receiving such payments from them? 4) Have you ever received a 1099 tax form from GAGE reporting monies you receive from them? If so, when? 5) Did the Board of Directors of GAGE formally approve any funds you may have received from them? 6) If

JEREMY Meeks
New Ideas, New Leadership, New Results
 VANDERBURGH
 for COMMISSIONER
 812.746.0433
www.meeksforcommissioner.org
meeksforcommissioner@gmail.com
 Paid for by Friends to Elect Jeremy Meeks

EDITORIAL

IS IT TRUE?

continued from page A-8

you received money given by the City Of Evansville to GAGE to pay you as an employee or consultant of GAGE, who worked this financial arrangement out with you and the leadership of GAGE? 7) Can you provide us with a written agreement or contract stating the terms of your employment with GAGE? IS IT TRUE these questions were also sent to the Mayor's Communications Director?

IS IT TRUE we are still waiting for a date, time and place of Evansville City Councilman Dan McGinn's rebuttal speech to Mayor Jonathan Weinzapfel's State of the City Address as the minority council person?

IS IT TRUE the Posey County Commissioners have decided who will fill the recently vacated Building Commissioner position? IS IT TRUE qualified candidates have been calling commissioners to submit resumes? IS IT TRUE they were reportedly told the position may be permanently filled by someone with the last name of Batteiger? IS IT TRUE they expect to officially fill the position on April 1?

IS IT TRUE the City-County Observer has moved out of the U.S. Incubator on John Street? IS IT TRUE we are working out of the office of the publisher's relative in Mount Vernon while we finish cleaning and painting our new office? IS IT TRUE we believe this move will better show our non-partisan reporting? IS IT TRUE we will continue to produce this online newspaper each week?



JIM TOMES
YOUR REPUBLICAN CANDIDATE
FOR STATE SENATE DIST. 49

RESTORE INDIANA'S FUTURE
VOTE FOR JIM TOMES MAY 4TH

www.jimtomes.com Paid for by the committee to elect Jim Tomes,
Marge Tomes, Treasurer

EDITORIAL

OLIVER CATWELL

As the weather has been warming I have had to watch my step going from the house to the garage where Peg's cat, Oliver, rules. Just like the rest of you who are owned by cats, Peg and I are usually mere staff to Oliver, the rather round headed tabby feline that envisions himself the Lord Protector of JPeg Ranch.

Normally he does not deign to acknowledge us, but with spring about to spring Oliver has decided to regale us with his portrayal of both Orion and Nimrod; Oliver is sometimes classic and occasionally Biblical. It depends upon whether he chooses to hunt at night, his normal want, or in broad daylight.

If he forages as Orion, he will deposit such trophies as mice, his favorite, or if a Nimrod daytime foray, birds. Regardless, he takes the meat for himself and leaves us the offal and feathers which he deposits on the once clean rug near the door.

Today I spent about fifteen minutes with gloves, paper towels and a plastic bag as I worked my way from the door to the house to the car door. While I gingerly picked

up small entrails, Oliver pretended to be unconcerned as he perched on the hood of my car. Actually, since he has clawed and scratched his way across Peg's car and mine, we bought covers for both cars (about \$100.00 worth) and carefully pull them over the vehicles every night. It might make sense on the driveway, but because Oliver easily mastered the pet door to the garage, we have to Oliverize the cars inside.

The pet door was designed for Peg's dog, Haley, but as Haley is totally buffaloeed by the cat, the dog has abandoned any claim to the garage. Haley has twice the size but less than half the fight of Oliver. Oliver is now so dominant he will rub up against Haley who scampers away like a chicken before a coyote.

When Oliver started making his offal offerings a couple of months ago it was not too bad. I would find some feathers or a paw or claw or maybe a little blood. But now hearts, lungs, intestines and enough other internal stuff appear to make my old high school biology teacher swoon. It did not occur to me back then that I was preparing for a career as an accessory after the fact to feline faunacide.

You might wonder why I am just now taking umbrage at Oliver's cavalier treatment of both us and other wildlife. Well, when I found a dead rabbit at the end of a trail of entrails that looked like Cassandra could read the future from them, I began to be concerned. After all, Peg is not that large a person and I have noticed Oliver following her movements.

IS IT TRUE the best way to get the word out about the City-County Observer is for you to forward it on to your friends? IS IT TRUE we encourage you to pass it on?



NEWS

City, County Join to Apply for Broadband Technology Grant

The Board of Public Works will be asked today to approve a Memorandum of Understanding (MOU) between the City of Evansville and the County Commission which will allow them to apply together for a National Telecommunications and Information Administration (NTIA) grant.

The proposed broadband network would have more capability for multiple users, instead of one network for one application. This would augment the wireless initiative originally announced by the City which would have been a single network for a single function. The network would enhance City and County services and public safety; provide access for people who don't have the internet and better access for people who have wireless internet. It would also allow for increased government efficiencies. In addition, the proposed network would have the capability and capacity to allow local government to work with outside entities such as institutions of higher education and hospitals.

"In this wired age, anyone who wants or needs the internet should have affordable broadband access. This grant will allow us to provide that access while serving public safety and government needs," said Mayor Jonathan Weinzapfel. "I am pleased that we are joining with the County to make this application. It makes sense that a broadband network should be accessible not only in Evansville but to the broader population in the County as well."

Through the MOU, the City and County have also agreed to establish the Greater Evansville Broadband Alliance (GEBA). GEBA will manage a City-County broadband network and be responsible for receiving and disbursing all funds received through the NTIA grant. The County Commission approved the MOU on March 16th.

Funds for the NTIA grant are being made available through the American Recovery and Reinvestment Act. The federal government is placing an emphasis on building broadband infrastructure to make high speed broadband more accessible and affordable to more people across the country.

\$2.6 billion remains of the \$7 billion allocated for NTIA grants; the City and County are jointly applying for a little more than \$5.2 million. If awarded to the City and County, the grant will cover 70% of the cost of the local project. The remaining costs and expenses will be shared by the City and County.

The grant paperwork is being assembled and is due by March 26th. Awards will be made by September 30, 2010.

Cheryl Musgrave

Cheryl cleaned up her neighborhood.

Now it's time to clean up the House!



Cheryl is focused on creating the right environment to grow jobs. The key to job growth is fair and low taxes and education that gives students the skills to compete in a global market.

hard working • effective • fair

Cheryl Musgrave

for State Representative

www.cherylmusgrave.com

Editor and authorized by: Friends of Musgrave, Dan Carville, Treasurer



Carols Hairport
(812) 479-1662

1901 COVERT AVE
COVERT AND WEINBACH

Cuts
FULL SERVICE SALON
Extensions

- *STYLES
- *PERMS
- *BODY WAVES
- *MANICURES

- *COLORS
- *FOILS
- *SPIRALS
- *PEDICURES

- *HIGHLIGHTS
- *WAXINGS
- *LOWLIGHTS
- *ACRYLICS

LOOKING FOR A STYLIST WHO REALLY CARES?

LETA MOUNTS OWNER/STYLIST




Gift Cards Available



<--- weekly specials on styles and nails --->

* walk ins and new clients always welcome *

POLICE AND FIREFIGHTERS RECIEVE A 20% DISCOUNT

Mondays by Appointment

TUE-FRI 10:00-6:00

SAT 10:00-2:00

WEEKLY HAPPENINGS

EVERY MONDAY

Jay Johnson, 8pm

\$1.50 Domestic Long Necks

\$2 Wells & \$3 Jager Bombs

EVERY TUESDAY

College Karaoke with
The Experience hosted by
Sam & Jimmy

\$2.50 Bacardi & Bacardi Flavors

\$1 Domestic Drafts

\$4 Domestic Pitchers

\$2.75 Jim Beam & \$3 Rumple Mintz

EVERY WEDNESDAY

Karaoke with The Experience
Hosted by SK

\$5 Jack Daniels, \$5 Captain Morgan

\$3 Jager Bombs

EVERY THURSDAY

Takin' It Back Thursdays

with DJ Jon J

Best of 80's & 90's Dance Music

\$4 Busch Light Pitchers

\$2.50 Long Island Ice Teas

\$2.00 Blue Moon 16 oz. Draft

\$3.00 Flavored Vodka Bombs

EVERY FRIDAY

\$3.50 Jager Bombs, \$5 Goldschlager,

\$3.50 X Rated & \$5.00 Rumple Mintz

EVERY SATURDAY

\$3 Select Bottle Beer (Bass, Corona,
Guinness, Heineken, Land Shark,
Newcastle, Sam Adams, Shock Top,
Stella Artois and Fat Tire)

\$2 Canadian Mist

ClubRoyaleNightclub.com

401-1699 • 2131 W. Franklin

Open Mon. Sat. 3pm

MySpace.com/ClubRoyaleNightClub

Friend Us on Facebook.com

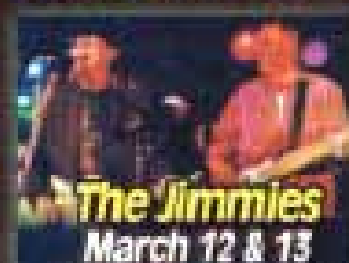
Club Royale

NIGHTCLUB

Entertainment & drink specials nightly!

Now Serving Hot Appetizers!

Peacock March 5 & 6



The Jimmies
March 12 & 13



McFly March 19 & 20

AKACIA March 26 & 27



St. Patrick's O'ay Party!

Beads & Drink Specials!

**Watch Your Favorite Team
NCAA March Madness!**

**Nascar Race
Here Every
Sunday!**

**Join our
VIP Text List!**

and receive up-to-date
info on entertainment
& drink specials
Text the word
'ROYALE' to 83361



COMMUNITY

Who, What, When and Where!

Compiled by Sherry Burdette

CIVIC THEATRE EVENTS

LOCAL FLAVOR ADDS SPICE TO "BETWEEN DAYLIGHT AND BOONVILLE" AT CIVIC THEATRE

Set in coal mining country only a few miles from Evansville, *Between Daylight and Boonville* comes to Civic Theatre in February. Written by Evansville native and professional screenwriter Matt Williams, the story focuses on Carla who dreams of escaping her dreary existence, but whose plans are interrupted when an ordinary day becomes extraordinary as an unforeseen crisis strikes her community. The play is a touching and humorous study of the women who rise above the grimmer facts of their existence with gritty humor and fierce dignity.

•*Between Daylight and Boonville* opens Feb. 12, and runs Friday, Saturday and Sunday (except for Sunday, Feb. 14, when there is no show) through Feb. 28. Friday and Saturday shows are at 8:00pm, and Sunday matinees are at 2:00.

•Tickets are \$17 for adults, \$16 for seniors 65 and older and \$12 for students 21 and younger. Tickets can be purchased at the theatre box office at 717 North Fulton Avenue, or by calling 425-2800.

Matt Williams, a Reitz High School graduate, went on to help create the sitcoms *Rosanne* and *Home Improvement*, and is now a partner in the New York production company, Wind Dancer Production Group.

Kensington Blaylock returns to the Civic stage as Carla; she was last seen in Steve Martin's *The Underpants* last spring. Paula Boenigk plays Lorette, and Kate Small Scheu portrays Marlene, two of Carla's friends and wives of coal miners. Leo Kempf, who last appeared in the summer of 2007 in *Almost, Maine*, play Cyril, one of the coal miners. Ebony Kiegel plays Wanda, a miner's widow, in her Civic Theatre debut. Maddy Plough, last seen in last spring's *Anne of Green*

Gables, plays Carla's daughter Stacy. Reece McDaniel and Harrison Holder, playing Jimmy and Bobby respectively, who are Marlene's sons, are both making their Civic Theatre debuts.

THE MAINSTAGE SEASON:

•The Sugar Bean Sisters, by Nathan Sanders.
April 9, 10, 16, 17, 18, 23, 24, 25, 2010 Sponsor: 104FM WIKY

THE NEXTWAVE SHOWS:

•Footloose, by Dean Pitchford and Walter Bobbie.
This Nextwave production will feature a cast of high school students.
May 13, 14, 15, 16, 2010
Sponsor: Integra Bank

EVANSVILLE JAZZ SOCIETY

ESB Big Band in Concert

COMMUNITY

Who, What, When and Where!

The ESB Big Band will present the next concert in the Jazz Guest Artist Concert Series in Wheeler Concert Hall on Sunday, February 28, at 4:00 p.m. This event is co-sponsored by the UE Department of Music and the Evansville Jazz Society.

The ESB Big Band, with members from the ranks of the Evansville Symphonic Band, has become a favorite of local audiences since its founding in 2007. Normally performing as a part of the summer concert season of the Evansville Symphonic Band, this will be the band's first concert independent of the Symphonic Band.

The band will be playing a variety of selections, representing styles ranging from the swing era of the 1930's and 40's to the best of today's contemporary big band jazz, with selections from the libraries of the Orchestras of Count Basie, Woody Herman, and many others.

The band is directed by Dr. Tim Zifer, director of jazz studies at the University of Evansville, and the members include many performers familiar to local audiences, including Tim Smith, trumpet; Mark Eifler, trombone; and Matt Kincaid, guitar.

Admission to the concert is \$15.00 for adults, \$10.00 for Evansville Jazz Society members and \$5.00 for students with I.D. Tickets can be obtained by contacting the UE Department of Music at 488-2754, at H&H Music, or at the door.

For more information, contact:

Dr. Edwin Lacy, University of Evansville
812/488-2227 or EL2@evansville.edu

EVANSVILLE MUSEUM (Arts, History, Science)

Winter hours. Visitors are being welcomed Wednesdays through Saturdays from 10:00 a.m. – 5:00 p.m. and Sundays from Noon – 5:00 p.m. The Museum will be closed to the public on Mondays and Tuesdays. These hours will be effective through Tuesday, February 23, 2010.

Admission is free, but there is a suggested contribution of \$2 per person.

Membership begins at \$35, with a total of seven membership categories

HISTORY OF EVANSVILLE TALK AND BOOK SIGNING

Main Gallery

ART OF AFRICA: OBJECTS FROM THE COLLECTION OF WARREN ROBBINS

Through March 19

ART OF AFRICA: SCULPTURE OF THE DOGON

Through March 19

ELIZABETH ZUTT: A COLLECTOR'S EYE

March 28 – June 13

Old Gallery

HIGH SCHOOL ART SHOW

March 18 – April 18

TOBI KAHN: OHRA, SKY AND WATER MEDITATION

April 26 – June 27

Town Hall

CORNUCOPIA: ARTIFACTS FROM THE HISTORY COLLECTION

February 7 – August 15

Koch Science Center

MIDWEST WILD WEATHER

Through April 18

HANDS-ON 4

May 2 – September 12

Koch Planetarium

WORLDS IN MOTION

Through March 7

Commercial Realty Specialist

"Hahn Realty is dedicated to the development of our ever growing Evansville community."

Call me about our commercial opportunities.



Joc Kiefer • 812-477-6980



COMMUNITY

Who, What, When and Where!

BAD ASTRONOMY: MYTHS AND MISCONCEPTIONS

March 13 – May 30

NINE PLANETS AND COUNTING

June 5 – August 15

EVANSVILLE PHILHARMONIC GUILD EVENTS

All events are open to the public & are fund raisers for the Guild.

HOMES OF NOTE house tour

On Saturday, April 24, the Philharmonic Guild will hold its HOMES OF NOTE house tour. The tour is to be held in the Sutherland Subdivision from 9 a.m. until 4 p.m. Bus service, underwritten by Vectren, will be available at the South end of Washington Square where cars can be parked. Tickets are \$15 in advance and \$18 the day of the tour. They can be purchased at Wildflower, Paul's Men Store, Schnucks, and the Philharmonic office. For more information, contact Nancy Heavrin at 476-8912.

GALLERY EVENTS

The Ohio Valley Art League is proud to present "The Luster of Silver: Contemporary Metalpoint Drawings" on loan for the permanent collection of the Evansville Museum.

RiverWind Gallery presents:

Art by some of North America's most sought after artists will be displayed at Riverwind Gallery March 9 through April 30. Limited edition canvas giclee images of cowboy and Native American images, some from real life scenes in today's west with others from days past, show the majesty and beauty of the land and the people.

10400 W. State Road 662,
Newburgh, IN 47630
812/853-2537

IVY TECH COMMUNITY COLLEGE EVENTS

Continuing Education Workforce Training and Personal Enrichment

Ivy Tech Community College is more than just the largest and fastest-growing institution of higher education in Indiana. We're the state's largest provider of Workforce Training in the state offering nearly 20,000 certifications and one million hours of training annually to the state's businesses and industries. Ivy Tech is also the state's leading provider of Continuing Education and the Continuing Education program in Evansville is the largest in the Ivy Tech system, training nearly 6,000 individuals annually.

I have included a link above for our current Continuing Education Workforce Training and Personal Enrichment classes. Hopefully, you and your employees can take advantage of some great offerings and the tremendous resources through Ivy Tech.

We are always looking for new opportunities to expand our programming. We exist to serve you – please contact us for any training need. If you would like customized training specific to your company, our Corporate Services program can assist you.



THE PIE PAN
THE PIE AND SANDWICH SHOP

OPEN 7 DAYS
Smoke Free
Home Cooked Meals
Breakfast Specials
Sandwiches
28 Different Pies
Gift certificates
www.thepiepan.net

425-2261
905 North Park Dr.

READERS' CHOICE
AWARDS
PLATINUM

COMMUNITY

Family Fun Census Event

(EVANSVILLE, IN)- The City of Evansville and the Just for Kids Spring Break Camp are teaming up for a family-friendly event to pre-register kids for the camp and promote the Census. Please join us for a free afternoon of fun on Sunday, March 21st, at the C.K. Newsome Center, from 1:00 p.m. to 4:00 p.m.

"Getting an accurate and complete Census count is critical to our future, particularly because that number is used as a basis for funding programs such as education, social services and road maintenance. As such, we are taking every opportunity to spread the word about why it is vital that everyone take part in the Census," said Mayor Jonathan Weinzapfel. "We are grateful to be able to partner with Just for Kids for this event and hope to encourage parents to come out and enroll their children in this free camp over spring break."

Parents who attend Sunday's event will be able to sign their children up for the Just for Kids Spring Break Camp. Just for Kids is a free, community-supported camp which gives kids K-12 something positive to do over their spring

break. The camp runs from March 22nd to March 24th and from noon to 5:00 p.m. daily. Free lunch and a snack will be provided each day. The program includes dancing, diversity programs, field trips, arts and crafts, sports, and reading.

While signing up their children for Just for Kids, parents will also receive information about the 2010 Census. The City of Evansville is fortunate that the Census Portrait of America Road Tour (<http://2010.census.gov/2010census/roadtour/>) will make a stop at Sunday's event. The Road Tour is designed to educate the public about the 2010 Census and the positive impact their participation can have on their local community and the nation.

There will also be things for the kids to do while their parents are learning about the Census or signing them up for the Just for Kids Spring Break Camp. Mesker Park Zoo will bring animals for show and tell and the Evansville Police Department will be fingerprinting. Members of Evansville's semi-pro football team, the Ohio River Bearcats, will be on hand as well. There will be clowns and other entertainment. Free food and giveaways will also be provided.

E. L. WALTERS
AIR CONDITIONING & HEATING INC.

Life made simple.

No Overtime Charges
Now Through March 31st

24 Hour Service
(812) 422-0101

Residential and Commercial experts
We specialize in commercial kitchen equipment

Earn energy tax credits up to
\$1500

Visit elwalters.com to Find tips on maintaining your system and more.

Coleman
HEATING & AIR CONDITIONING

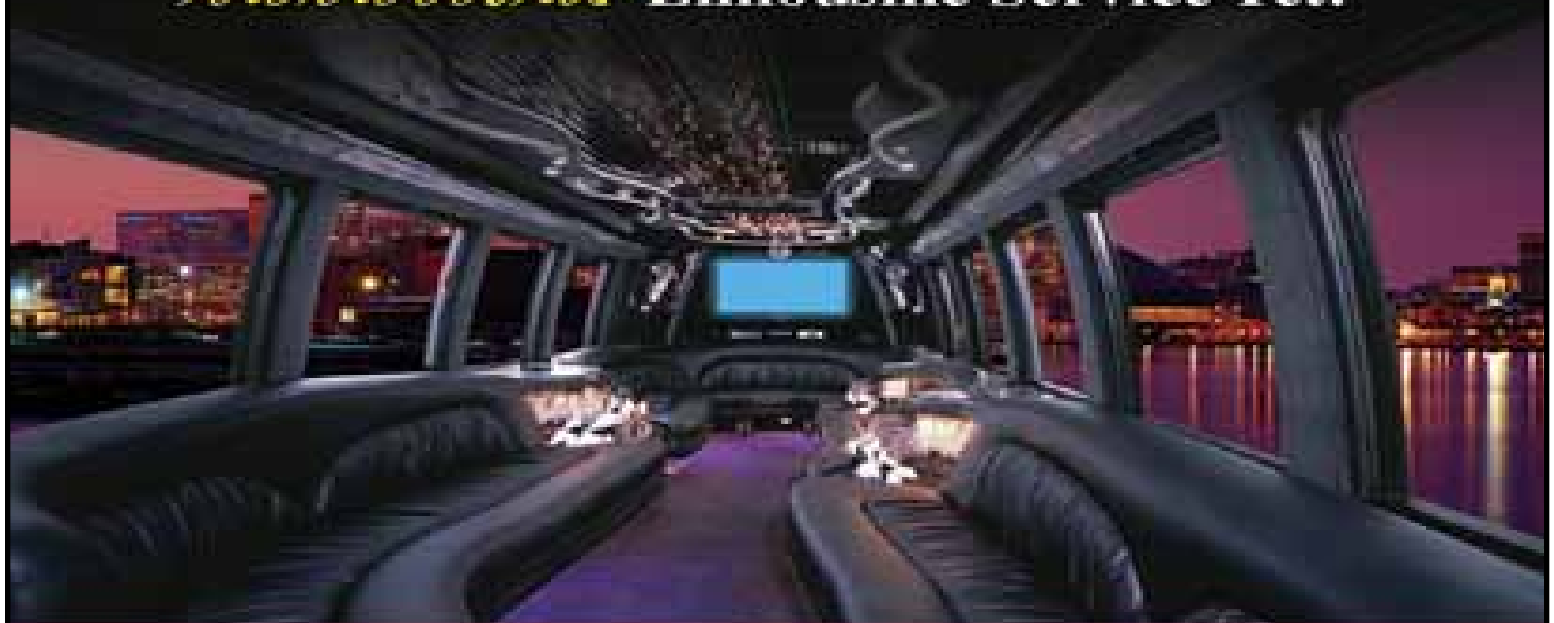
TRANE
It's Hard To Stop A Trane.

TRANE
COMFORT SPECIALIST

E.L. WALTERS
AIR CONDITIONING & HEATING
422-0101
(800) 397-0101

NEW REDUCED RATES!

The Tri-State's **LARGEST** and Most
luxurious Limousine Service Yet!



Perfect for Bachelor & Bachelorette Parties!

The Only Exclusive V.I.P. Service in Town!

Sedan Services also Available



Includes...

- Front of the line access
- All Leather Interior
- 42" Plasma TV
- Accomodations for up to 20 people
- Free Cover to 12 of the Hottest Clubs in Town!

SHSH Limousine, LLC 402-7100

Call Stephen at Show Me's • www.showmeslimo.com

RELIGION

THIS WEEK'S SCRIPTURES

~ Compiled by Charlene Braker

THURSDAY.....

"WE...PLEAD WITH YOU NOT TO RECEIVE THE GRACE OF GOD IN VAIN."

2 Corinthians 6:1

FRIDAY.....

"BUT HE THAT RECEIVED SEED INTO THE GOOD GROUND IS HE THAT HEARETH THE WORD, AND UNDERSTANDETH IT; WHICH ALSO BEARETH FRUIT, AND BRINGETH FORTH, SOME A HUNDREDFOLD, SOME SIXTY, SOME THIRTY."

Matthew 13:23

SATURDAY.....

"ALL THE COMMANDMENTS WHICH I COMMAND THEE THIS DAY SHALL YOU OBSERVE TO DO, THAT YOU MAY LIVE, AND MULTIPLY, AND GO IN AND POSSESS THE LAND WHICH THE LORD SWORE TO YOUR FATHERS".

Deuteronomy 8:1

SUNDAY.....

"I INDEED BAPTIZE YOU WITH WATER...BUT HE... WILL BAPTIZE YOU WITH THE HOLY SPIRIT AND FIRE."

Matthew 3:11

MONDAY.....

"TEACH METODO THY WILL; FOR THOU ART MY GOD: THY SPIRIT IS GOOD: LEAD ME INTO THE LAND OF UPRIGHTNESS."

Psalms 143:10

TUESDAY.....

"I WILL NEVER LEAVE YOU NOR FORSAKE YOU."

Hebrews 13:5

WEDNESDAY.....

"COME UP HERE, AND I WILL SHOW YOU THINGS WHICH MUST TAKE PLACE".

Revelations 4:1




A woman's life is about making all kinds of choices, large and small. And Vanderburgh County Right to Life is here to support a woman's right to choose life for her unborn child. We work through education, advocacy, and services to protect women's health and the life of their unborn children.

We support the belief that Life is the Right Choice!

Vanderburgh County Right to Life

812-474-3195 • vcrtl@evansvilleforlife.com
20 N.W. Fourth Street, Suite 308 • Evansville, IN 47708

www.vcrtl.com

An affiliate of Indiana Right to Life™

BIBLE TRIVIA

by Wilson Casey

1. Is the book of Gethsemane in the Old or New Testament or neither?
2. What's the only book that mentions Christ's tomb being sealed? Matthew, Mark, Luke, John
3. Where was Jesus crucified? Samaria, Colossae, Golgotha, Horeb
4. Which disciple doubted Jesus had risen? Peter, Andrew, Thomas, Thaddeus
5. Jesus ate fish and what else first after the resurrection? Bread, Wine, Honeycomb, Manna
6. What happened to Judas Iscariot in Mathew 27:5? Stoning death, Fled into night, Became mute, Hanged himself

(c) 2010 King Features Synd., Inc.

For more trivia, log on to www.TriviaGuy.com.

ANSWERS: 1) Neither; 2) Matthew; 3) Golgotha; 4) Thomas; 5) Honeycomb; 6) Hanged himself

EDUCATION

Kiva.org founder Jessica Jackley to speak at USI

The University of Southern Indiana will bring a free public lecture by Jessica Jackley, a founder of Kiva.org, to the community on Wednesday, March 31.

Jackley will present "The Story of Kiva: Connecting People through Microlending to Alleviate Poverty," at 7:30 p.m. in Forum I in the Wright Administration Building at USI. Her lecture is sponsored by the University Core Curriculum and the College of Business.

Kiva.org is a non-profit microfinancing website that allows people to lend as little as \$25 to a specific third world entrepreneur, empowering borrowers to lift themselves out of poverty. Jackley, a finalist for TIME magazine's 2009 Top 100 and a USA Network Character Approved Honoree for 2010 is revolutionizing personal giving and inspiring a new generation of philanthropists through technology.

Named one of the top ideas of 2006 by The New York Times Magazine, and praised by Oprah Winfrey, Bill Clinton and countless others, Kiva is one of the fastest-growing social benefit websites in history. Since its founding in 2005, it has loaned over \$100 million from lenders to entrepreneurs across 182 countries. By 2012, it expects to have loaned over \$1 billion to the world's working poor. For all its success, Kiva ("unity" in Swahili) remains animated by a simple message: "To connect people through lending to alleviate

poverty," and by the idea that relationships are a powerful force for positive change.

The Kiva website explains its unique model in the world of microfinance this way: "You choose who to lend to - whether a baker in Afghanistan, a goat herder in Uganda, a farmer in Peru, a restaurateur in Cambodia, or a tailor in Iraq - and as they repay their loan, you get your money back. It's a powerful and sustainable way to empower someone right now to lift themselves out of poverty."

Jackley became convinced of the power of microfinancing when she was a graduate student. She has worked in Kenya, Tanzania, and Uganda for Village Enterprise Fund and Project Baobab on impact evaluation and program development. She worked in the Stanford Center for Social Innovation to launch the inaugural Global Philanthropy Forum, and at Amazon.com, Potentia Media, the International Foundation, and World Vision. She teaches Global Entrepreneurship at the Marshall School of Business at the University of Southern California.

She has a Master of Business Administration degree from the Stanford Graduate School of Business and a Bachelor of Arts degree in philosophy and political science from Bucknell University. She is also a trained yoga instructor, avid surfer, and poet.

For more information, call Dr. Mark Krahling, director of the University Core Curriculum, at 812/464-1712.

Attract Customers

Want to advertise in one of the fast growing on-line newspapers around?

Call Lance Turner at (812) 480-3185 or email marketing.ccobserver@live.com today!

The City-County Observer Mission Statement

The primary focus of this online publication will be built upon the foundation of honesty, trust, and strong principles of journalistic integrity. Our mission will be to give out readers the answers to vital, often complex information they need to live safer and more enriched lives. This publication shall be non-partisan with consistent and objective reporting. We will not only report and inform our readers about political events, but we will seek out and provide insight into the not-so-apparent political issues, which help shape our lives. In essence our publication will be built on the cornerstone of service and trust to the taxpayers and citizens of Posey, Vanderburgh and Warrick Counties. While we strive to educate and inform, we shall serve as a community watchdog by sounding the alarm whenever our citizens rights are in danger of being violated by our elected and appointed officials.

Published (c) 2009 by Dogtown Publishing (d/b/a The City-County Observer)

EDUCATION

USI master's degree in communication approved

The University of Southern Indiana's Master of Arts in Communication degree program was approved by the Indiana Commission for Higher Education on March 12 and will be offered beginning in fall 2010. The Master of Arts in Communication will prepare students for careers or advancement in advertising, public relations, human resources, media management, and non-profit organization leadership, or serve as a springboard for a doctorate in communications. The degree can be completed in two years of full-time study.

After much research, the Master of Arts in Communication Planning Task Force discovered that few publicly funded universities in the country have a graduate program that incorporates communication studies, public relations and advertising, journalism, and radio and television into a cohesive graduate program. USI's Master of Arts in Communication program will incorporate both communication studies and mass communication courses in all areas.

Unlike other graduate programs that emphasize theory

over application or vice versa, the program will instill rigorous theoretical and methodological training as well as practical applications of those skills to solve real world problems. Coursework will focus on both hands-on experience and research in subjects including conflict and negotiation, regional economic development, corporate responsibility, and organizational functioning.

The program is comprised of 36 semester hours: nine required hours in theory/methodology, 21 elective hours in content courses, and six hours of directed research with thesis and capstone project options. A variety of delivery methods for courses will be offered, including night and weekend classes, distance education, and hybrid offerings.

Dr. Wes Durham, assistant professor of communication studies, will serve as director of the program. He said, "We want to be flexible and serve as many of our potential clientele as we possibly can. This will be a popular program that will be key to organizational advancement."

The master's degree has been in the Department of Communications' long-range plan since 1991. In the Report on the 2007 President's Task Force on Workforce and Economic Development, regional employers indicated that a master's degree in communication was the second highest need in terms of graduate education.

Dr. Wayne Rinks, chair of the department, said, "I am exceedingly happy that we now have approval for this program because I know it's going to serve a lot of people here in this area - both traditional students and persons in the workforce who need an advanced degree and better communication skills. I would like to commend Wes Durham on his leadership with the master's committee in getting this proposal completed and getting it done in an expeditious matter."

The addition of a master's degree in communication brings USI's graduate offerings to 11 programs. The program was approved by the USI Board of Trustees in May 2009.

For more information about the Master of Arts in Communication degree, contact Durham at wdurham@usi.edu or 812/464-1739.



**CUSTOM
HARDWOOD
MILLWORKS**

Interior trim and doors, stairway parts,
custom cabinets and finishing.
Now offering bamboo wood.

**FREE
ESTIMATES**

by: Wittmer Distributors
Call 1-812-257-4343 (cell)

ENTERTAINMENT 7 DAYS A WEEK BOTH LOCATIONS!

EAST:

Morgan Center Drive
401-7469

**Mon.. Tue..
Wed.. Fri..
Sat.. & Sun.**
DJ & Karaoke

Thursday
Kerry & The Double D's

5 Time: 5 Wings
Bone-In or Boneless for \$2.45!
EVERYDAY 3-6pm.
9pm-Close &
ALL DAY SUNDAY!
*Excludes Drink For-Pan-Show Events

SHOW-ME'S

EVANSVILLE, IN

Smoking Sections Available!

BEST LUNCH IN TOWN!
ONLY \$5.⁹⁵ Monday-Friday!

ORDER ONLINE!
www.ShowMes.com

\$1.00 14 oz. Drafts
7 Days a Week
Served in an Ice Cold Glass!

St. Paddy's Day Party
Wednesday, March 17th
Both Locations

WEST:

Pearl Drive
402-7100

**Mon.. Tues..
Fri.. Sat. & Sun.**
DJ & Karaoke

Tuesday
\$1.50 Coors Light 14oz
EVERY Tuesday

Wednesday
Kerry & The Double
D's (9pm-12am)

Thursday
Nick Hamilton



Sun., Mar. 21st UFC: Live! (8pm)
Sat., Mar. 27th UFC: 111 (9pm)

**NASCAR &
NCAA Madness**



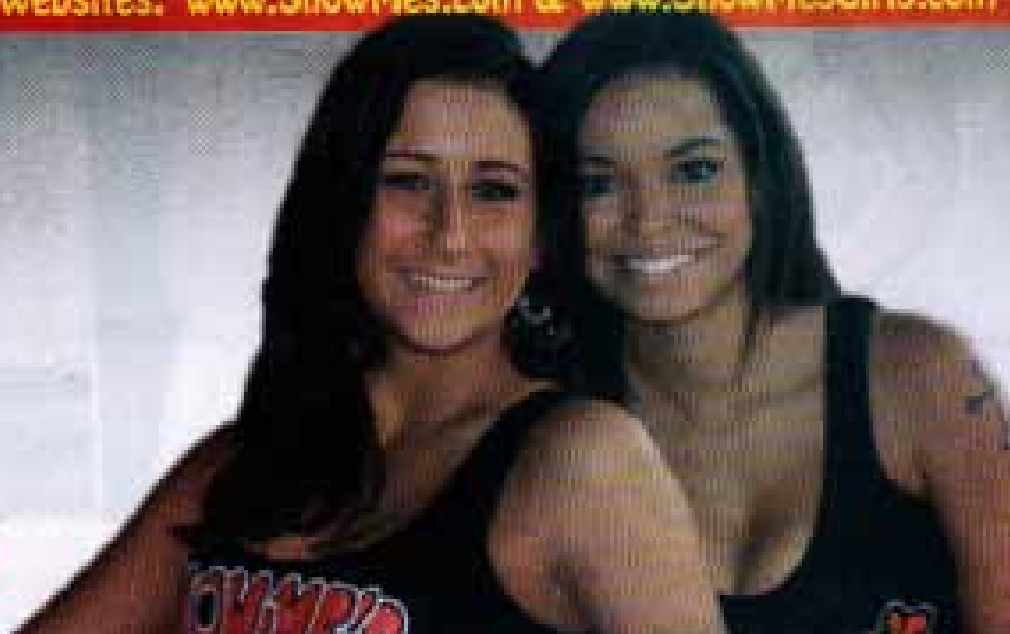
Sun., Mar. 28th (7pm)

HOT SPOT FOR PAY-PER-VIEW SPORTS!

Check Out Our 2 New Websites: www.ShowMes.com & www.ShowMesGirls.com



**The Girls in Our Ads
Actually Work Here!**



EDUCATION

Women's golfers finish third at Eagle Invitational

DAYTONA BEACH, Fla.—The No. 17 University of Southern Indiana women's golf team shot a final round 328 Sunday to move up two spots and finish third out of 15 teams at the Embry-Riddle University Eagle Invitational. The Screaming Eagles shot 338 in the opening round Saturday and finished the tournament with a 666.

Senior Jessica Dooley shot a two-over-par 74 Sunday to move into a tie for fourth out of 80 competitors. Dooley, who finished the tournament with a two-day score of 160, tied for the tournament low round with her effort on the final day.

Fellow classmate Angela Dehning shot matching 83s to finish the two-day tournament in a tie for 14th, while sophomore Lindsey Carr recorded a 169 (84-85) to finish in a tie for 22nd.

The Eagles return to action March 27-28 when they compete in the Northern Kentucky University Spring Invitational in Perry Park, Kentucky.



Senior Angela Dehning shot matching 83s to finish in a tie for 14th.

Carousel Court Apartments

"A Loving Family Community"

Evansville's New East-Side 55+ senior community.

1309 Carousel Court Evansville, IN 47715

812-962-3777 * email: monroelc@yahoo.com



Conveniently located beside Carousel Restaurant, and behind Washington Square Mall. Walking distance to shopping, restaurants, library, doctor's office, and bus stop. Residents receive 15% discount and free delivery from the Carousel Restaurant.

Amenities include:

- Free cable
- Free water
- Refrigerator with ice maker
- Dishwasher
- Free trash pickup
- Flat-top stoves/self-cleaning ovens
- Garbage disposal
- Ceramic tiles in bathroom and kitchen
- Custom cabinets
- Walk-in closets
- All electric
- Free access to community room
- Washer and dryer hook-ups
- Central air
- Pets welcome
- Emergency pull strings

SPORTS

Ballinger, Henderson claim All-League honors

EVANSVILLE, Ind.—University of Southern Indiana senior All-American Mary Ballinger and sophomore Jackie Henderson were named to the All-Great Lakes Valley Conference Indoor Women's Track and Field teams for their efforts at the GLVC Indoor Championships.

Ballinger, the GLVC Indoor Track Athlete of the Year, earned first-team honors after winning the conference titles in the mile and the 3,000 meters and finishing second in the 5,000 meters. It marks the third time that Ballinger has earned All-Conference honors for indoor track and the eighth time in track and cross country.

The USI/Integra Bank Female Student Athlete of the Year in 2008-09, Ballinger recently earned her eighth All-America honor of her career with an eighth-place finish in the mile at the NCAA II Indoor Championships Saturday.

Henderson was selected to the second team after finishing third in the 3,000 meters and fourth in the 5,000 meters at the GLVC Indoor Championships. It marks the first time in her track career and the second time in her cross country/track career that Henderson has garnered All-Conference accolades.

The Screaming Eagles open the outdoor season April 2-3 when they compete at the Washington University Invitational in St. Louis, Missouri.



Senior All-American Mary Ballinger picked up her eighth All-GLVC honor when she was named first team for indoor track.

QM
Oxford Mortgage Corp
\$8,000
tax credit available to you!
through the American Recover and Reinvestment Act of 2009.

Eligibility: First time homebuyer, or have not owned a home in the last three (3) years.

Tax Credit: The full credit is available for individuals with a total adjusted gross income of no more than \$75,000 or \$150,000 on a joint return.

Stop
renting

&

Start
OWNING
today!

Call Scott Klueh
(812) 476-9740
or
(812) 499-2413

The home must be purchased and closed between January 1, 2009 and November 30, 2009.

5330 Vogel Road Evansville, Indiana 47715
Phone (812)-476-9740 Fax (812)-476-9745
Toll Free (888)-933-9091 www.oxfordmc.com

SPORTS

Ellerman, Wood Break 80 Again

ONEONTA, Ala. -- Maggie Wood shot 78 and Lauren Ellerman shot 79 today to lead the University of Evansville golf team through the final round of the Samford Invitational at Limestone Springs Golf Course. Jacksonville State defended its championship with a team score of 904 to win the 10-team tourney. Evansville finished ninth at 982.

Ellerman ended up 15th in the field of 55 golfers with a 54-hole score of 232. Wood was 25th at 236. Both broke 80 in all three rounds. South Alabama's Fanny Eimeren earned medalist honors at 3-under-par 213.

SAMFORD INVITATIONAL TEAM SCORES: 1. Jacksonville State 904; T2. Samford, South Alabama 910; 4. Louisiana-Monroe 917; 5. UAB 932; 6. Tennessee Tech 946; 7. Western Kentucky 948; 8. Belmont 978; 9. Evansville 982; 10. Tennessee State 1180.

EVANSVILLE RESULTS: T15. Lauren Ellerman 75-78-79=232; T25. Maggie Wood 79-79-78=236; T31. Emily Johnson 81-82-81=244; 50. Alyssa Key 93-88-90=271; 51. Chelsea Zusan 92-94-91=277.

Medalist: Fanny Eimeren 69-70-74=213 (-3)



Maggie Wood's 78 topped the Aces Tuesday in the final round of the Samford Invitational.

West Side Location Now Open! LiquorLocker.org

Check out the Beer Guy Videos at WatchEvansville.com

St. Joe Ave.	Weinbach Ave.	Morgan Ave.	Heidelberg Ave.
(812) 402-3232	(812) 479-6111	(812) 476-7431	(812) 759-2637

Craft Beer

Be a fan!

Mix Six

Build your own six pack!

Choose from over 400 Micros & Imports

\$9.00 & up

St. Patrick's Day Special!

March 17, 5-8pm (St. Joe Location Only)

FREE Bottle Etching!

Woodford Reserve 750ml
Gentleman Jack 750ml

Killian's Irish Red

6 Pack \$6.49
12 Pack \$11.49

Check Out the New Walk-In Cigar Humidor at our West Side Location!

HOURS: West & East (Both Locations): Mon-Thurs 9-12am, Fri-Sat 9-1am / North: Mon-Thurs 7-12am, Fri-Sat 7-1am

SPORTS

Aces Get Re-Match With MLS KC Wizards

Three years ago, the University of Evansville soccer team took on the MLS Kansas City Wizards, and battled a team from the top ranked professional league in the United States to a 2-2 draw. The Purple Aces get another chance to play the pros on Saturday, April 3, when they meet the Wizards at Anheuser Busch Soccer Park in St. Louis. The 5:00 p.m. friendly against K.C.'s split squad will highlight the six-match spring season for the Aces. Coached by former Olympian and U.S. National Team player Peter



Tom Irvin is the one UE players with experience against the MLS Kansas City Wizards. The two teams meet again April 3 in St. Louis.

Vermes, Kansas City begins its MLS season March 27 against DC United and then takes a two-week break before hosting Colorado April 10.

"We are committed to giving our guys the opportunity to pit themselves against the best level of competition available," says UE Head Coach Mike Jacobs. "For aspiring professionals on our team, the best way is to play against the standard, which is Major League Soccer."

One player still around in 2010 who played for the Aces in their first match against the Wizards is redshirt junior Tom Irvin. His throw-in led to a goal by Dan Gibson that put the Aces up 1-0 in the 41st minute. Cory Elenio, now with the MLS Columbus Crew, made it 2-0 before Kansas City rallied to tie the match 2-2. Evansville has already played one match this month, defeating Lipscomb 3-0 March 4. The remainder of the spring schedule includes Bellarmine this Saturday at 12 noon at Black Beauty Field, IPFW at home March 28 at 2:00, and a doubleheader April 17 at Lexington, Ky. against Marshall and Kentucky.

Jacobs has nine starters and eight other letterwinners returning from a squad that posted a 12-8-1 record and reached the finals of the State Farm Missouri Valley Conference Tournament in November.

"This spring is a little different for us because we have so many veteran players," according to Jacobs. "As opposed to 'who' will play for us, it's more about 'how' our team plays."

NEW LEADERSHIP → for a ← NEW TOMORROW

Wendy "Mac"
McNamara
FOR STATE REPRESENTATIVE

Every candidate has different motivations for running for office. My motivation is grounded in my long held desire to serve my state. As an advocate for civics and civic education, I feel it is necessary for the voice of the people to be heard and those in office to be held accountable to the citizens of the district. I decided to run immediately after the election of 2008, primarily because of those reasons. The people need to have representation that is willing to listen and be accessible.

Wendy's Mission: Listen to voters • Bring new businesses to SW Indiana and work to retain the jobs we have • Continue my passion to advance and innovate in education so that our children can prosper • Restore honesty, integrity, and transparency in State Legislature.



www.wendymac2010.com

Advertisement paid for by the Committee to Elect Wendy McNamara

SPORTS

UE Women's Soccer Team Adds Eight For 2010

University of Evansville women's soccer coach Krista McKendree and assistant coach Matt Kagan have signed eight players who will join the UE squad for the 2010 season, including a member of Canada's Under 20 National Team. The newcomers include defenders Emily Schultz of Leawood, Kansas and Lauren Tiernan of Boise, Idaho; midfielders Carolyn Shenberger of Portland, Oregon, Stephanie Thompson of Evansville, and Vanessa Legault-Cordisco of St. Therese, Quebec, and attacking players Kaitlin Robinett of New Albany, Indiana, Breanna Beine of St. Peters, Missouri, and Erin Waldrop of Hoover, Alabama.

"I am very excited about the incoming class, and thankful to Matt for all of the hard work in helping get these quality student-athletes," McKendree said. "They will not only add to our team on the field but they are all truly great people as well. These girls embody what we want here in the Aces' family: great work ethic, desire to succeed, academic prowess, competitive attitude, strong character, and they all share the same goal of the current team, which is to strive for a conference championship. The girls are what make this program so special and there is no doubt that Emily, Kaitlin, Breanna, Stephanie, Erin, Lauren, Vanessa, and Carolyn will continue on with that tradition. We cannot wait for these eight young ladies to get here and start working toward achieving our goals."

Here is a look at each of the eight newcomers, who will join 16 returning players on the 2010 squad as the Purple Aces attempt to re-capture the Missouri Valley Conference championship that they last won in 2008. The 2008 squad won Evansville's fifth MVC regular season championship, sixth MVC Tournament championship, and reached the NCAA Tournament for the fourth time in school history.

Emily Schultz---5'7 Defender---Leawood, Kansas...Blue Valley West High School:

Kansas 6A State High School Champions (19-2-0)...NSCAA #7 in the nation...Plays club soccer for KCFC Alliance...Team competes in MRL...Kansas State Cup Finalists 2005-2009...Kansas ODP State Team and Regional Camp

"Emily comes to us from one of the best clubs in the Midwest and can play in the back or as a holding midfielder. She has good size and reads the game very well. Her ability to connect passes out of the back will be great as we try and build from our back four. We think she can come in and challenge for a spot at the back and we are very excited to have her this fall."

Kaitlin Robinett--5'5 Forward--New Albany, Indiana...New Albany High School:

Scored 77 goals and made 24 assists in high school career...2009 District 5 1st Team...Plays club soccer for Mockingbird Valley Soccer Club in Louisville...Team competes in MRL...4 time Kentucky State Champion... Indiana ODP state team member 2004-2006

"Kaitlin is a dynamic attacking player who possesses great speed. She is another player who comes to us from a very strong and respected club. She will add depth to our attacking line and can get in behind backs with her pace. She is extremely feisty and fights to win balls up front. We think Kaitlin can be a goal scoring threat at this level as well as a playmaker in multiple attacking roles."

Breanna Beine--5'6 Forward--St. Peters, Missouri...Francis Howell Central High School

2009 2nd Team All State...2nd Team All Metro...1st Team All Conference and GAC Player of the Year...Scored 23 goals in 2009...Plays club soccer for Saint Louis Scott Gallagher...Team competes in MRL and National Red Bull League...2008, 2009 State Finalist...Missouri ODP State Team 2007...Missouri ODP Regional Pool Player 2007...Honored as Saint Louis Soccer Hall of Fame "Future Soccer Star" in 2009

"Breanna is another player coming to join our Aces family from the Saint Louis area. She comes from one of the top clubs in the country and plays for their National Red Bull team. She is physical, strong, very fast and has the ability to score goals because she is a good finisher. She has great touch and will add another dimension to our attacking play."

Stephanie Thompson--5'6 Midfielder--Evansville, Indiana...Reitz High School

2009 Indiana High School 1st Team All State...2009 Evansville Prep Soccer Player of the Year...2008 Honorable Mention All State...55 goals and 46 assists in high school career...Plays club soccer for Fort Wayne Fever.

"Stephanie is the only Evansville native in this year's recruiting class and we are extremely excited she chose to stay in the city and play her college soccer here at UE. She was the City player of the year and is extremely versatile. She can play multiple positions and has shown the ability to score goals, be a playmaker, and she can also defend. Her club team allowed her to play against top level competition and that will prepare her for the Missouri Valley Conference and our schedule."

Erin Waldrop--5'7 Midfielder/Forward--Hoover, Alabama...Hoover High School

Plays club soccer for Birmingham United Soccer Association (BUSA)...6 time Alabama State Champion...2009 Southern Regional Champion...3 Years Alabama ODP Region Camp selection...Played 90 minutes vs Mexican U-17 National Team in 2008

"Erin comes from BUSA, which is a top club in the United States. She is a big, physical presence who can play in the midfield or up front. She has very good speed which will enable her to play as a wide midfielder or wing player for us. Her height gives us a target in the air and we think she has the ability to be a very good player at this level."

Lauren Tiernan--5'11 Defender--Boise, Idaho...Capital High School

2009 Southern Idaho All Conference...Capital High School Defender of the Year and Team Captain 2009...Plays Club Soccer for Boise Capitals...Member of Idaho ODP 2007

"Lauren is the second player in two years coming to our squad from Boise, Idaho. She is 5'11, which is a great advantage. She has good pace and covers a lot of ground. She is solid in the air and can use both feet. She is very clean with her distribution, which is a key element to playing in the back. We are excited to have her and think she is going to be a very good player for us."

PROPERTY AVAILABLE FOR APPROPRIATE DEVELOPMENT



1112 PARRETT ST.

Anyone interested should check out

www.evansvillearts.com.

This contains information about this and other properties.

For those seriously interested in investing in this property, submit a proposal to Tom Barnett, Exec. Director of the Dept. of Metropolitan Development.

~ This property is located in Haynie's Corner.

~ This property is owned by the city, who is looking for an artist/investor.

~ The building has approx. 3,300 square feet.

~ Has photo darkroom.

~ Is setup for a pottery kiln.

~ Parking in rear for 4 vehicles.



Paid for by the Proud American Pat Pittman.

ENTERTAINMENT

Super Crossword FIRST BORN

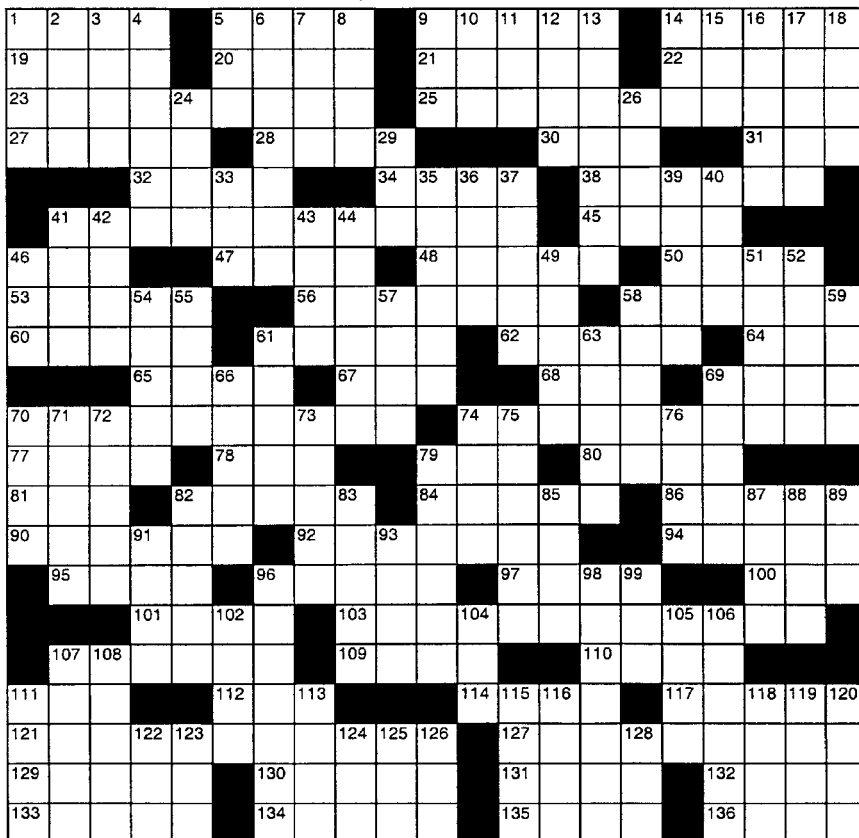
ACROSS

- 1 Like some cellars
5 Fossey's friends
9 — acid
14 Actress Witherspoon
19 Gulf ruler
20 Computer command
21 Word with coffee or linen
22 Intense
23 Writer born 1/1/1879
25 Bandleader born 1/1/1900
27 Soprano Anna
28 Facts, for short
30 Diocese
31 Flagon filler
32 Vacation location
34 Cease
38 Join the leisure class?
41 General born 1/1/1745
45 Adored one
46 Paid player
47 Athenian arcade
48 Musical movement
50 Madison's st.
53 Wrong
56 Splitting headache?
- 58 Donkey's declaration
60 Flapjack sauce
61 Tacitus' tongue
62 Glue guy
64 Eggs
65 Fancy fabric
67 Nationality suffix
68 Boathouse item
69 Secular
70 Patriot born 1/1/1735
74 Comic born 1/1/1943
77 TV's "— McBeal"
78 — Tin Tin
79 Welcome item?
80 Norse deity
81 Deteriorate
82 More delicate
84 Singer John
86 Marking post
90 Henson amphibian
92 Deceive
94 Riyadh resident
95 "I Am . . . I —" ('71 song)
96 Japanese city
97 Amazes
100 Smith or Stout
101 A swan was her swain
- 103 G-man born 1/1/1895
107 "Petrouchka," for one
109 Novelist Seton
110 Memo start
111 Fumble
112 Supporter
114 Nice or Newark
117 Abate
121 Actor born 1/1/1909
127 Seamstress born 1/1/1752
129 Buttercream, e.g.
130 Northern hemisphere?
131 — podrida
132 Ages
133 "Lovergirl" singer Marie
134 Like the Taj Mahal
135 Viewed
136 Skillful

DOWN

- 1 Judge
2 Snowballs, sometimes
3 Irritate
4 Make a bundle
5 Palm Sunday beast
6 Exam subject?
- 7 Like Steven?
8 Medieval menial
9 Rig a race
10 — pro nobis
11 Ullmann or Tyler
12 Horus' mother
13 "Ta-ta!"
14 — room
15 It's found in the Seine
16 Actress Samantha
17 Panther Bobby
18 Ziegfeld Folies designer
24 — Hashanah
26 Stalk
29 Actress Massen
33 — Alamos, NM
35 Power or Guthrie
36 — about (approximately)
37 Carnaby Street
39 London landmark
40 Nastase of tennis
41 Bunch of battalions
42 Film —

- 43 Jedi instructor
44 Restaurant employee
46 — de deux
49 Actor Alain
51 Shallow area
52 Find fault
54 Tamish
55 Practice punching
57 Workbench attachment
58 "Salome" character
59 Texas city
61 "The Stepford Wives" author
63 Massenet opera
66 Earn
69 "The Threepenny Opera" star
70 Transmission setting
71 Fugard's "A Lesson from —"
72 Marine leader?
73 Foe
74 Buttermilk's mistress
75 Canada's capital
76 Bigwigs
79 Tune
82 — Castro
83 Sangria
85 Scent
87 Entice
- 88 Central European river
89 Veto
91 Grain grinder
93 British gun
96 Kind of grasshopper
98 Carve
99 Every guy is one
102 College hotshot
104 Cumberland —
105 French airport
106 Swerved
107 Clamp
108 Football's Herber
111 Touch up the text
113 Therefore
115 Bassoon relative
116 Depend (on)
118 Made tracks
119 Lofty initials?
120 Classroom sound
122 Jillian or Sothern
123 Khan opener?
124 New Haven hardwood
125 "— is me!"
126 Turf
128 Crestfallen



Weekly SUDOKU

by Linda Thistle

		5		7		6	
8				3			9
	1		5		7	4	
3				4		7	
		9	1		2		
2	7			8			3
	9			6			1
5			3	2		8	
		8	7		6		

Place a number in the empty boxes in such a way that each row across, each column down and each small 9-box square contains all of the numbers from one to nine.

DIFFICULTY THIS WEEK: ★★

★ Moderate ★★ Challenging
★★★ HOO BOY!

© 2010 King Features Synd., Inc.

Answers for these puzzles can be found on page D-6

GOT ADS?

Want to advertise in one of the fast growing online newspapers around? Call Lance Turner at (812) 480-3185 or email marketing.ccobserver@live.com today!

HEALTH

DR. DONOHUE'S

TO YOUR GOOD HEALTH

Spinal Stenosis a Major Cause of Back Pain

DEAR DR. DONOHUE: *Sixty-two must be the age when everything falls apart. I'm there. My latest body part to give way is my back. I have back pain a considerable amount of the time. It finally brought me to a doctor, who tells me I have spinal stenosis. I have been told to take Aleve for my pain, and I'm scheduled for physical therapy. I don't have great hopes of a cure. What exactly is this? What else can be done for it? -- T.R.*

ANSWER: Spinal stenosis accounts for about one-third of all cases of low-back pain. It's an elusive concept that calls for an anatomy lesson. The backbones (vertebrae, spinal column) have a tunnel running through them -- the spinal canal. In that canal or tunnel is the spinal cord and spinal nerves. Spinal stenosis signifies that the spinal canal has narrowed and is pressing on the spinal cord or spinal nerves. That, in turn, produces back pain that can spread to the buttocks, the back of the thighs or the lower leg. The pain worsens on standing or waking, and goes away when the

person sits.

Aging is the most important factor in developing spinal stenosis. Back ligaments, which hold the backbones in place, thicken and calcify. Arthritic changes in the backbones sprout bone spurs that impinge on the canal. Back discs -- the spongy shock absorbers between adjacent backbones -- degenerate and crumble, and that narrows the canal and exerts pressure on the spine and spinal nerves.

Nonsurgical treatment employs physical therapy to strengthen and stretch back muscles in an attempt to relieve pressure on the spine and its nerves. Anti-inflammatory medicines like your Aleve control pain. You might need stronger pain medicines. Epidural injections of cortisone ease inflammation and give the spinal canal and spinal nerves more room. "Epidural" means the injection is made into a space in the spinal canal above its covering membrane. Surgery is a solution when these measures fail.

The pamphlet on back pain discusses the many conditions that lead to one of medicine's biggest problems. It describes different conditions and their treatments. To obtain a copy, write to: Dr. Donohue -- No. 303W, Box 536475, Orlando, FL 32853-6475. Enclose a check or money order (no cash) for \$4.75 U.S./\$6 Canada with the recipient's printed name and address. Please allow four weeks for delivery.

DEAR DR. DONOHUE: *Will you repeat the article on a runny nose when eating? My husband has it, and it's embarrassing to him. -- J.W.*

ANSWERS: Some explain why noses run upon eating by invoking sensitivity to temperature changes, i.e., hot or cold food. Or it could be that spices start the nose dripping. Chewing might trigger a reflex that makes the nose run. And, in all truth, the reason could be something that remains a mystery.

Atrovent nasal spray, a prescription item, can sometimes stanch the drip. A drying antihistamine taken an hour before meals is another way to keep the nose dry. People shouldn't resort to medicine before every meal. They should save it for occasions when a drippy nose is a source of embarrassment.

This curiosity has a name, gustatory rhinorrhea.

Dr. Donohue regrets that he is unable to answer individual letters, but he will incorporate them in his column whenever possible. Readers may write him or request an order form of available health newsletters at P.O. Box 536475, Orlando, FL 32853-6475.

(c) 2010 North America Synd., Inc.

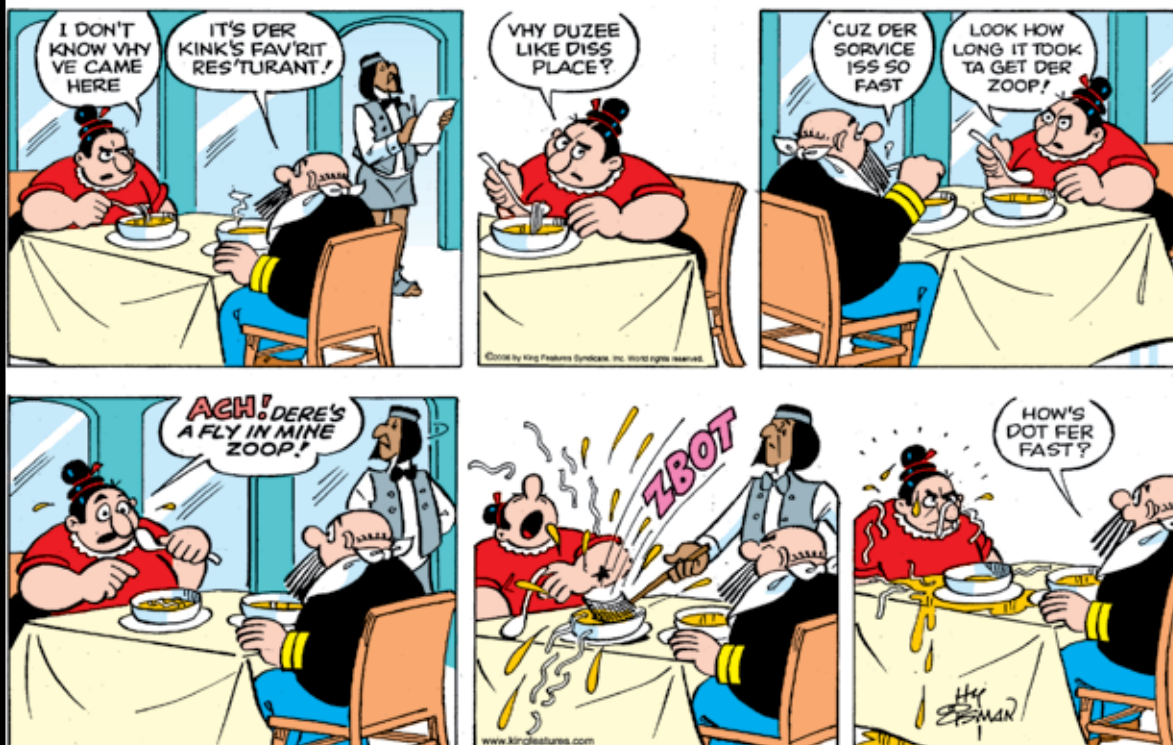
All Rights Reserved



ENTERTAINMENT

KATZENJAMMER KIDS

BY HY EISMAN



ENTERTAINMENT



FLASH GORDON

BY JIM KEEFE

FOR MONTHS REDDOL HAS WANDERED THROUGH THE WILDERNESS OF MONGO.

RAVAGED, HE APPROACHES THE FORTRESS THAT ONLY MONTHS BEFORE HE HAD FLED IN TERROR...

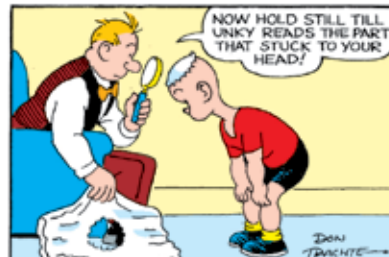
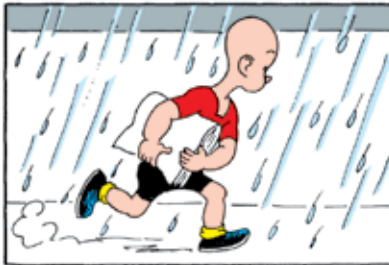
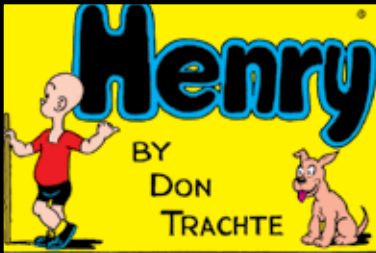
THE CASTLE OF HIS MASTER, GARAKAHN.

FOR A MOMENT HE HESITATES, HIS HEART POUNDING. VISIONS OF THE CREATURE THAT LURKS WITHIN THE CASTLE TEAR AWAY AT WHAT LITTLE REMAINS OF HIS SANITY.

DRIVEN BY HUNGER, HE SUPPRESSES HIS FEAR AND MOVES ON. TO SURVIVE HE MUST FIND FOOD.

REDDOL HAS NO WAY OF KNOWING THAT THE MONSTER SET FREE BY FLASH GORDON IS NO MORE.

BUT HAD HE ANY INCLINATION OF WHAT AWAITS HIM INSIDE, HE WOULD NEVER HAVE RETURNED.



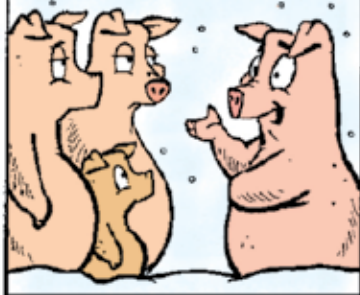
ENTERTAINMENT

Amber Waves

by Dave T. Phipps



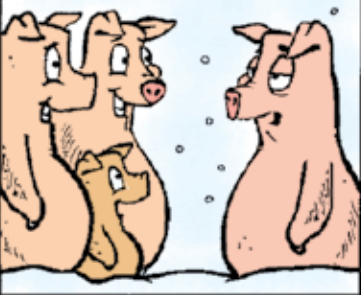
HEY GUYS, WHAT DO YOU SAY WE BUILD A SNOWMAN OR MAYBE GO SLEDDING? OOH BETTER YET. HOW ABOUT A BIG SNOWBALL FIGHT?



WE COULD MAKE SNOW ANGELS AND BUILD A BIG SNOW FORT!



OK, HOW ABOUT WE SKIP ALL THAT, EAT A SECOND LUNCH AND TAKE A LONG NAP?



©2010 by King Features Syndicate, Inc. World rights reserved

MAMA'S BOYZ

WWW.MAMASBOYZ.COM

JERRY CRAFT



The Spats

by Jeff Pickering



©2010 King Features Syndicate, Inc. World rights reserved

ENTERTAINMENT

Super Crossword

Answers

D	A	M	P		A	P	E	S		F	O	L	I	C		R	E	E	S	E	
E	M	I	R		S	A	V	E		I	R	I	S	H		E	A	G	E	R	
E	M	F	O	R	S	T	E	R		X	A	V	I	E	R	C	U	G	A	T	
M	O	F	F	O		I	N	F	O			S	E	E			A	L	E		
				I	S	L	E			S	T	O	P			R	E	T	I	R	E
		A	N	T	H	O	N	Y	W	A	Y	N	E		I	D	O	L			
P	R	O			S	T	O	A		R	O	N	D	O		W	I	S	C		
A	M	I	S	S			D	I	V	O	R	C	E		H	E	E	H	A	W	
S	Y	R	U	P		L	A	T	I	N		E	L	M	E	R		O	V	A	
				L	A	M	E		E	S	E		O	A	R		L	A	I	C	
P	A	U	L	R	E	V	E	R	E		D	O	N	N	O	V	E	L	L	O	
A	L	L	Y		R	I	N			M	A	T		O	D	I	N				
R	O	T		F	I	N	E	R		E	L	T	O	N		P	Y	L	O	N	
K	E	R	M	I	T		M	I	S	L	E	A	D			S	A	U	D	I	
		S	A	I	D		K	Y	O	T	O		W	O	W	S			R	E	X
				L	E	D	A		J	E	D	G	A	R	H	O	O	V	E	R	
		B	A	L	L	E	T		A	N	Y	A			I	N	R	E			
E	R	R			A	Y	E			P	O	R	T		L	E	T	U	P		
D	A	N	A		A	N	D	R	E	W	S		B	E	T	S	Y	R	O	S	
I	C	I	N	G		I	G	L	O	O		O	L	L	A		E	R	A	S	
T	E	E	N	A		D	O	M	E	D		E	Y	E	D		D	E	F	T	

Weekly SUDOKU

Answer

4	2	5	9	1	7	3	6	8
8	6	7	4	3	2	5	1	9
9	1	3	5	6	8	7	4	2
3	5	1	2	9	4	8	7	6
6	8	9	1	7	3	2	5	4
2	7	4	6	8	5	1	9	3
7	9	2	8	5	6	4	3	1
5	4	6	3	2	1	9	8	7
1	3	8	7	4	9	6	2	5

IS IT TRUE the best way to get the word out about the City-County Observer is for you to forward it on to your friends? **IS IT TRUE** we encourage you to pass it on?

SALMON PATTIES

\$7.29

WITH CHOICE OF 3 SIDES

PORK CHOPS

\$10.99

**PAN-FRIED or GRILLED
WITH CHOICE OF 3 SIDES**



10 PIECES OF FRIED CHICKEN TO GO \$11.99
Includes 2 Sides & Dinner rolls. Additional sides \$2.99



FAMILY RESTAURANT

479-6388

5115 Mainline Ave.
Brentwood, TN 37027

1 One Dollar Off Any Meal

Minimum \$6.50 Purchase
Not valid with any other discounts or specials.
Mon.-Sat. Only
Expires 11/30/09

2 Two Dollars Off Any Meal

Minimum \$10.00 Purchase
Not valid with any other discounts or specials.
Mon.-Sat. Only
Expires 11/30/09

3 Three Dollars Off Any Meal

Minimum \$20.00 Purchase
Not valid with any other discounts or specials.
Mon.-Sat. Only
Expires 11/30/09

GUESS WHO'S COMING TO DINNER?



Special Music: The Conquerors Quartet, organized eighteen years ago, the Conquerors have continually witnessed God's blessing upon their ministry. The four-part male vocalists and pianist create a unique sound that spans all stylistic and generational boundaries. Their selections which blend the old with the new are sure to please every listener.

Special Guest: Abby Johnson, is the former Planned Parenthood Director who quit her job. That simple act has become a national news story because Johnson, 29, was the director of a Planned Parenthood clinic in Bryan, Texas who said she experienced a "change of heart" while participating in an abortion procedure. Johnson has now joined a group called Coalition for Life which prays outside the clinic where she worked. You won't want to miss this compelling story that changed a life forever.



Keynote Speaker: Kirk Cameron, is an American actor best-known for his role as Mike Seaver on the television situation comedy *Growing Pains*. Recently, he portrayed the lead roles in the *Left Behind* film series and in the 2008 drama film, *Fireproof*. Cameron is also an active Christian evangelist, currently partnering with Ray Comfort in the evangelical ministry, The Way of the Master, and has co-founded The Firefly Foundation, a camp for children with special needs. Kirk has a very personal pro-life story to share and has a tremendous passion for adoption.

You and Your Friends
Are
Cordially Invited
To
The Annual

Vanderburgh County Right to Life
Spring Banquet

Thursday, April 8, 2010

Exhibition Hall
The Centre

Doors Open
5:00 p.m.

Dinner & Awards
6:00 p.m.

Kirk Cameron
8:00 p.m.

Proceeds Benefit:
Vanderburgh County Right to Life

Register online at www.evansvilleforlife.com or by calling (812) 474-3195

DPAT.COM

D-Patrick BMW

Home of The Ultimate Driving Machine®

New 2010 BMW 128i Coupe



\$399
per month/36 months

*36 month lease, \$2,000 cash or trade-in, \$10 monthly (paid half day of lease-includes), plus tax, title, license, acquisition fee and security deposit. With approved credit. 10,000 miles per year. See dealer for details. #60128

New 2010 BMW 328i Sedan

\$399
per month/36 months

*36 month lease, \$2,000 cash or trade-in, \$10 monthly (paid half day of lease-includes), plus tax, title, license, acquisition fee and security deposit. With approved credit. 10,000 miles per year. See dealer for details. #60211



New 2010 BMW 528i XDrive Sedan



MSRP \$51,720
Sale Price
\$48,583
#60121

*Plus tax, title, license and fees. See dealer for details.

New 2010 BMW X3 XDrive 30i

MSRP \$45,595
Sale Price
\$39,837
#60122



*Plus tax, title, license and fees. See dealer for details.

D-Patrick BMW

200 N. Green River Rd.
812.473.6500

*We approved credit through participating dealers and BMW Financial Services by qualified buyers. All programs plus tax, title and license, see dealer for details. Offer ends 3/31/10.

D-Patrick BMW

Financing and Leasing



The Ultimate Driving Machine

2010 Mercedes-Benz GLK350



MSRP \$38,625

\$469
per month/36 months

*Lease \$469 per month for 36 months. Total due at delivery \$4,319 includes MSRP of \$38,625 with a cap cost reduction of \$2,790. Plus tax, license and fees. With approved credit. 10,000 miles per year. See dealer for details.

2010 Mercedes-Benz C300 Sport 4MATIC



MSRP \$38,265

\$349
per month/36 months

*Lease \$349 per month for 36 months. Total due at delivery \$4,143 includes MSRP of \$38,265 with a cap cost reduction of \$2,790. Plus tax, license and fees. With approved credit. 10,000 miles per year. See dealer for details.

D-Patrick

www.dpat.com

200 N. Green River Rd.
and the Lloyd Expressway
(812) 473-6500

Sale ends 3/31/10



Mercedes-Benz

Experience the World of Audi



New 2009 Audi A3



MSRP \$31,225

sale price

\$27,794

Cold Weather Package, Premium Package

#60116

Plus tax, title, license & fees, see dealer for details.

2010 Audi Q5

The unmistakable Q5 sets a new standard for dynamic crossover performance, design and luxury.

Now in stock and ready for delivery!



D-Patrick
AUDI

200 N. Green River Rd.
473.6500

Truth in Engineering

sale ends 3/31/10

New 911 Carrera S Cabriolet

MSRP \$109,465

now **\$94,963**



PORSCHE



D-Patrick

200 North Green River Road
(812) 473-6500
www.dpat.com

*Prices are plus tax, title, license and fees. Dealer retains all rebates and incentives. Sale ends 3/31/10.